

2020

Hoos Cow

Selling 90
Performance
Driven
Yearling
Angus Bulls

ANGUS BULL SALE



Hoos Unanimous 911



Hoos Incentive 929



Hoos Comrade 956



Hoos Hesston 992

Tuesday • **FEBRUARY 18, 2020** • 2 pm (MST)
Gordon Livestock Market, Gordon, NE

(308) 282-1171 or 1-800-924-1171

Judd & Brandy Hoos

Home (308) 327-2179 • Cell (308) 360-3556

Visit our website and view videos & catalog @ www.hooscowangus.com

2020

Hooscow ANGUS BULL SALE

Selling 90
Performance
Driven
Yearling
Angus Bulls

Tuesday • FEBRUARY 18, 2020 • 2 pm (MST)
Gordon Livestock Market, Gordon, NE
(308) 282-1171 or 1-800-924-1171

Auctioneer

Dace Harper (605) 515-1535

Delivery Options

- Take your bull home the day of the sale and receive \$250 off the purchase price of each bull.
- We will deliver the bulls to you beginning April 1st.
- We will keep and feed your bulls until you are ready for them. You will be charged \$2.00 per day beginning April 15th and you will need to pick them up.

Volume Discount

Buy 5 or more bulls you receive a 10% discount.

Sale Info

A sale order and supplement sheet providing yearling weights, ultrasound data, and scrotal measurements will be posted on our website on www.hooscowangus.com. Videos of the individual bulls will also be available on our website.

Fertility Screened

All bulls will be screened for fertility and breeding soundness by Dr. Jenny Meyer. Her analysis of this screening will be provided at sale time. In the event that you retest the bull and are not satisfied with the results we will gladly return your money, but we do request that you return the bull to our ranch at your expense.

View Sale Online

Videos should be available February 1st on Superior Livestock Video Auction @ www.superiorlivestock.com. Live bidding available sale day. More information on how to access the sale and videos is on page 2 of the catalog.

Catalog by JC Ranch Designs - Jessamyn Voss

Lunch

A complimentary steak dinner and refreshments will be provided prior to the sale.

Website & Video

Visit our website to view sale book and link to videos @ www.hooscowangus.com

Guarantee

Bulls selling for \$3000 or more are guaranteed for 90 days from the first turnout against injury. A credit of the purchase price less \$2500 will be applied towards another bull if available, or if the buyer prefers credit will be provided at next year's sale. The buyer retains the salvage value of the injured bull, but is required to contact us immediately so that inspection of the animal may take place. This is not a mortality insurance policy, nor does it cover mismanagement or neglect. However, if you are unhappy with your bull for any reason, even a couple years down the road, we want to know.

Parentage

All of the bulls have been DNA tested for parentage and the Angus GS genomic score, thus they have a DNA profile on record. This will allow you to test for parentage identification of their progeny if necessary in the future. The genomics have been incorporated into the bulls EPD profile.

Disposition Scoring

Once again, we have attempted to disposition score each bull to assist you in finding the right bulls for your operation. The score is as follows: (DISP)
1= Very Docile 2=Could become restless 3= Nervous
We will not attempt to sell any bulls with a flighty or aggressive disposition.

Welcome Cattlemen



We would like to invite you to the 2020 HoosCow Angus Bull sale! Hooscow is a family owned and operated angus seed stock operation dedicated to your success. We began buying registered cows in 1999, thus we are around that “20” year mark. During this period of time, we have worked hard to develop our “breeding program” by consistently using core genetics and applying heavy selection pressure. You are not just buying a bull, you are investing in predictable Hooscow genetics from a program that offers you transparency and support.

Mission Statement

Hooscow Angus is a performance driven Angus seed stock ranch focused on building cattle that add value to every segment of the industry. Although we consider EPD’s in our selection, we rely heavily on selection pressure in our environment using both tangibles and intangibles. We realize that our role as a seed stock provider is very important to your success. We are very careful in our selection, honest in our presentation, and sincere in our word.

Bull Development

We winter and calve the cows at our place two miles east of Rushville. In the spring, the bull pairs were hauled to our sandhills pasture South of Rushville where they spent the summer. These bulls have not been crept fed or supplemented while on the cow as we do not want to create an illusion in our maternal selection process. The bulls were weaned in September. They are developed in a small pasture in front of our house. We target these bulls to gain 3.25lbs per day. All the bulls in this sale have been genomic tested using the Angus GS.

Our Embryo Transfer Program

We have invested heavily into the world of embryo transfer, simply to mass produce cows that have excelled for us. The embryo calves are raised by commercial cows, thus individual data is not accurate for comparison.

Your Bull Selection

We are often asked “What is your best bull?” It strictly depends on what you have and what you are trying to accomplish. This is a set of bulls that offers different strengths. Our goal is to get you the bull you desire and hopefully the information in this catalog will provide the tools you need to select the right bull for your business. This is the third year we have given a disposition score to better assist you in your selection. If you have any questions or need more information do not hesitate to give us a call.

Judd & Brandy,

Hayden, Hannah & Hadleigh Hoos

Home (308) 327-2179 • Cell (308) 360-3556

hooscow@gpcom.net



LIVE SALE AUCTION, BIDDING & VIDEOS

MUST REGISTER PRIOR TO BIDDING

PLEASE DO SO BEFORE SALE STARTS

Here is how it works

• TURN IN BIDS OVER THE PHONE.

This is our traditional method of buying livestock. To get started simply go online to WWW.SUPERIORLIVESTOCK.COM and click on the tab titled "Register for a Buyer Number".

Select the registration form for Superior Productions and print the registration form, fill it out and fax it in to Superior Productions at (817) 378-3380 with a signature on it, or scan and email the form to info@superiorauction.com. You can also mail it in to the address provided on the form. Upon receipt of this information Superior will call you with a buyer's number and the bid line phone number that you will use on sale day to place bids over the phone.

• CLICK-TO-BID.

This is Superior's online bidding platform for cattle buying. Please note that high speed internet is required - this is not for dial-up or satellite internet. Registration is free, but you must become a member of WWW.SUPERIORCLICKTOBID.COM to sign up. Becoming a member is easy - just go to the homepage of WWW.SUPERIORCLICKTOBID.COM and follow the out-lined steps to get started. Input your information and select a username and password. You will receive an e-mail confirming you are a member. From that point forward you just have to sign in and select the sale you would like to register for and once approved you will receive an e-mail confirming which sale you are now registered for.

How to see the videos of the bulls

• OPTION 1:

Go to - WWW.SUPERIORCLICKTOBID.COM
At the top of the page select "All Auctions"
Scroll down to February 18th and select "Hooscow"
Then select the lot you would like to see.

• OPTION 2:

Go to - WWW.SUPERIORLIVESTOCK.COM
On the left of the screen select "Auction Schedule"
then "All Upcoming Auctions"
Find February 18th and select "Hooscow"
Then "View Video Catalog"

VIDEOS SHOULD BE AVAILABLE FEBRUARY 1ST

How to participate as an absentee buyer

We have made preparations to bid and buy livestock through Superior Productions' "Call or Click-To-Bid" service for those unable to attend in person on sale day. Please note that all of the lots in the sale will also be available for viewing online prior to sale day at WWW.SUPERIORLIVESTOCK.COM.

900

Hoos All Time 900

01/26/2019 • REG: #19552873 • 900

MARX ALMIGHTY 811 3KG
HOOS ALMIGHTY 238
IDEAL 608 OF 338 022

S R NEW DESIGN 5072
MARX PT DBL G ETHELDA 0211

HYLINE RIGHT TIME 338
IDEAL 022 OF 7451 701

IDEAL 8103 OF ELDO 5110 5213
IDEAL 4465 OF 6807 4286

IDEAL 7451 OF 8103 4465
IDEAL 507 OF 7451 806
IDEAL 806 OF 5201 503

IDEAL 5201 OF 033 076
IDEAL 503 OF 0340 6100

DISP
1

Act BW	ADJ WW	BW	WW	YW	MILK	Marb	RE	Fat	DAM NR
68	699	+4	+60	+102	+21	-.06	+.52	-.037	105

Gentle bull that is a possible heifer bull. Lots of power and performance.

901

Hoos All Time 901

01/28/2019 • REG: #19552874 • 901

MARX ALMIGHTY 811 3KG
HOOS ALMIGHTY 238
IDEAL 608 OF 338 022

S R NEW DESIGN 5072
MARX PT DBL G ETHELDA 0211

HYLINE RIGHT TIME 338
IDEAL 022 OF 7451 701

IDEAL 8103 OF ELDO 5110 5213
IDEAL 4465 OF 6807 4286

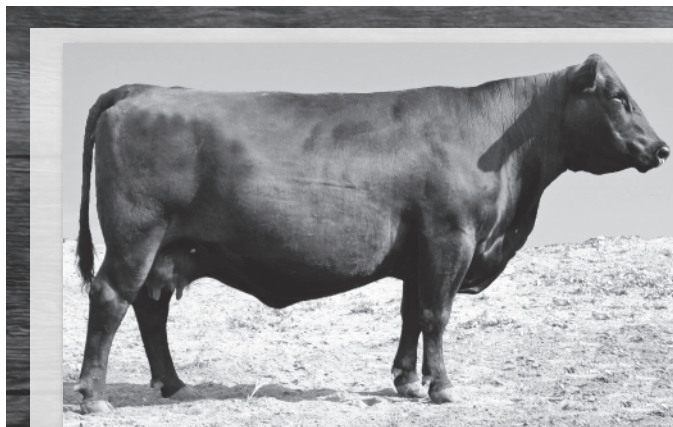
IDEAL 7451 OF 8103 4465
IDEAL 507 OF 7451 806
IDEAL 806 OF 5201 503

IDEAL 5201 OF 033 076
IDEAL 503 OF 0340 6100

DISP
1

Act BW	ADJ WW	BW	WW	YW	MILK	Marb	RE	Fat	DAM NR
88	656	+3.2	+61	+108	+18	-.01	-.71	-.011	105

These flush mates combine two of our best cows in 608 & 507.



Ideal 507 of 7451 806

Donor

Ideal 507 of 7451 806

02/19/2005 • REG: #15071790 • 507

IDEAL 8103 OF ELDO 5110 5213
IDEAL 7451 OF 8103 4465
IDEAL 4465 OF 6807 4286

ELDORADO 5110 IDEAL 2228 156
LANDMARK 5213 OF IDEAL 9100

D H D TRAVELER 6807
E E 4286 OF IDEAL 2240 1254

IDEAL 5201 OF 033 076
IDEAL 4633 OF 452 281
IDEAL 503 OF 0340 6100

IDEAL 033 OF 7365 8263
IDEAL 076 OF 692 8375

IDEAL 0340 SUPER X 5189 8234
ELDORADO 6100 IDEAL 5108 1561

BE PD	WE PD	YE PD	SC	MILK	MARB	RE
+3.2	+49	+90	+.13	+16	+.03	+.49

This 7451 daughter has excelled by producing calves with extra muscle. She has a production record of 7@102 BW, 6@108 WR, 4@111 YR, backed by a Ribeye ratio of 103.

A

Hoos Almighty 238

02/18/2012 • REG: #17307207 • 238

S R NEW DESIGN 5072
MARX ALMIGHTY 811 3KG
MARX PT DBL G ETHELDA 0211BON VIEW NEW DESIGN 878
S R LUCY 1138MARCYS PANHANDLE TOM
G NOLLETES ETHELDA 1 35-2HYLINE RIGHT TIME 338
IDEAL 608 OF 338 022
IDEAL 022 OF 7451 701LEACHMAN RIGHT TIME
HYLINE PRIDE 265IDEAL 7451 OF 8103 4465
IDEAL 701 OF 6807 503

BE PD	WE PD	YE PD	SC	MILK	MARB	RE
+1.7	+58	+106	+14	+24	-.22	+56

238 was our lead off and high selling bull in 2013, purchased by Clint and Julie Goodman. His Sire, Marx Almighty 811 needs no introduction if you've followed our program. His dam 608, served as a donor for us with a great production record and awesome phenotype.

**902**

Hoos All Time 902

01/30/2019 • REG: #19552875 • 902

MARX ALMIGHTY 811 3KG
HOOS ALMIGHTY 238
IDEAL 608 OF 338 022S R NEW DESIGN 5072
MARX PT DBL G ETHELDA 0211HYLINE RIGHT TIME 338
IDEAL 022 OF 7451 701IDEAL 7451 OF 8103 4465
IDEAL 507 OF 7451 806
IDEAL 806 OF 5201 503IDEAL 8103 OF ELDO 5110 5213
IDEAL 4465 OF 6807 4286IDEAL 5201 OF 033 076
IDEAL 503 OF 0340 6100

DISP
1

Act BW	ADJ WW	BW	WW	YW	MILK	Marb	RE	Fat	DAM NR
87	661	+1.6	+55	+101	+21	-.24	+.70	-.021	105

Moderate birth weight. Flush brother to 900 through 905.

904

Hoos All Time 904

02/01/2019 • REG: #19552877 • 904

MARX ALMIGHTY 811 3KG
HOOS ALMIGHTY 238
IDEAL 608 OF 338 022S R NEW DESIGN 5072
MARX PT DBL G ETHELDA 0211HYLINE RIGHT TIME 338
IDEAL 022 OF 7451 701IDEAL 7451 OF 8103 4465
IDEAL 507 OF 7451 806
IDEAL 806 OF 5201 503IDEAL 8103 OF ELDO 5110 5213
IDEAL 4465 OF 6807 4286IDEAL 5201 OF 033 076
IDEAL 503 OF 0340 6100

DISP
1

Act BW	ADJ WW	BW	WW	YW	MILK	Marb	RE	Fat	DAM NR
104	720	+2.1	+55	+98	+21	+.04	+.56	-.011	105

Masculine performer resulting from mating our best cows.

**Hoos All Time 903****903**

Hoos All Time 903

01/31/2019 • REG: #19552876 • 903

MARX ALMIGHTY 811 3KG
HOOS ALMIGHTY 238
IDEAL 608 OF 338 022S R NEW DESIGN 5072
MARX PT DBL G ETHELDA 0211HYLINE RIGHT TIME 338
IDEAL 022 OF 7451 701IDEAL 7451 OF 8103 4465
IDEAL 507 OF 7451 806
IDEAL 806 OF 5201 503IDEAL 8103 OF ELDO 5110 5213
IDEAL 4465 OF 6807 4286IDEAL 5201 OF 033 076
IDEAL 503 OF 0340 6100

DISP
1

Act BW	ADJ WW	BW	WW	YW	MILK	Marb	RE	Fat	DAM NR
103	763	+2.2	+59	+102	+25	+.13	+.61	-.044	105

The heaviest weaning bull of this flush.

**Hoos All Time 905****905**

Hoos All Time 905

02/03/2019 • REG: #19552878 • 905

MARX ALMIGHTY 811 3KG
HOOS ALMIGHTY 238
IDEAL 608 OF 338 022S R NEW DESIGN 5072
MARX PT DBL G ETHELDA 0211HYLINE RIGHT TIME 338
IDEAL 022 OF 7451 701IDEAL 7451 OF 8103 4465
IDEAL 507 OF 7451 806
IDEAL 806 OF 5201 503IDEAL 8103 OF ELDO 5110 5213
IDEAL 4465 OF 6807 4286IDEAL 5201 OF 033 076
IDEAL 503 OF 0340 6100 SS

DISP
1

Act BW	ADJ WW	BW	WW	YW	MILK	Marb	RE	Fat	DAM NR
93	630	+2.7	+53	+85	+17	-.08	+.58	-.003	105

Really nice structure and phenotype.



S A V Prosperity 9131

B S A V Prosperity 9131

03/02/2009 • REG: #16396523 • 9131

S A V 004 PREDOMINANT 4438
S A V PROVIDENCE 6922
S A V MAY 7238

S A V 8180 TRAVELER 004
S A V EMBLYNETTE 1182

LEACHMAN RIGHT TIME
S A R PROSPECTOR MAY 9124

B C C BUSHWACKER 41-93
S A V EMBLYNETTE 3123
S A V EMBLYNETTE 1177

PARAMONT AMBUSH 2172
R C ANITA T BANDO 918903

S A F 598 BANDO 5175
S A V EMBLYNETTE 7260

BE PD	WE PD	YE PD	SC	MILK	MAR B	RE
+4.5	+69	+108	+1.73	+31	+50	+36

Prosperity is a proven cow maker! The females are sound, attractive and very productive. The steers offer the lengthy feeder cattle that buyers demand.

906 Hoos Prosperity 906

02/01/2019 • REG: #19552879 • 906

S A V PROVIDENCE 6922
S A V PROSPERITY 9131
S A V EMBLYNETTE 3123

S A V 004 PREDOMINANT 4438
S A V MAY 7238

B C C BUSHWACKER 41-93
S A V EMBLYNETTE 1177

IDEAL 7451 OF 8103 4465
IDEAL 507 OF 7451 806
IDEAL 806 OF 5201 503

IDEAL 8103 OF ELDO 5110 5213
IDEAL 4465 OF 6807 4286

IDEAL 5201 OF 033 076
IDEAL 503 OF 0340 6100

DISP
1

Act BW	ADJ WW	BW	WW	YW	MILK	Marb	RE	Fat	DAM NR
99	671	+2.7	+59	+91	+24	+21	+37	+010	105

Nice made bull. The sisters to this flush are gorgeous.

908 Hoos Prosperity 908

02/03/2019 • REG: #19552881 • 908

S A V PROVIDENCE 6922
S A V PROSPERITY 9131
S A V EMBLYNETTE 3123

S A V 004 PREDOMINANT 4438
S A V MAY 7238

B C C BUSHWACKER 41-93
S A V EMBLYNETTE 1177

IDEAL 7451 OF 8103 4465
IDEAL 507 OF 7451 806
IDEAL 806 OF 5201 503

IDEAL 8103 OF ELDO 5110 5213
IDEAL 4465 OF 6807 4286

IDEAL 5201 OF 033 076
IDEAL 503 OF 0340 6100

DISP
1

Act BW	ADJ WW	BW	WW	YW	MILK	Marb	RE	Fat	DAM NR
96	729	+2.9	+60	+108	+27	+06	+37	+020	105

Prosperity x 507 should make good looking and hard working daughters.

907 Hoos Prosperity 907

02/02/2019 • REG: #19552880 • 907

S A V PROVIDENCE 6922
S A V PROSPERITY 9131
S A V EMBLYNETTE 3123

S A V 004 PREDOMINANT 4438
S A V MAY 7238

B C C BUSHWACKER 41-93
S A V EMBLYNETTE 1177

IDEAL 7451 OF 8103 4465
IDEAL 507 OF 7451 806
IDEAL 806 OF 5201 503

IDEAL 8103 OF ELDO 5110 5213
IDEAL 4465 OF 6807 4286

IDEAL 5201 OF 033 076
IDEAL 503 OF 0340 6100

DISP
1

Act BW	ADJ WW	BW	WW	YW	MILK	Marb	RE	Fat	DAM NR
102	781	+4.2	+64	+107	+24	-02	+58	-012	105

One of the really good bulls in this sale.



Hoos Prosperity 907



Connealy Earnan 076E

C Connealy Earnan 076E

08/03/2010 • REG: #16969555 • 076E

KMK ALLIANCE 6595 187
CONNEALY CONSENSUS
BLINDA OF CONANGA 004

SITZ ALLIANCE 6595
G A R EXT 916

RITO 616 OF 4B20 6807
BLEND A OF CONANGA 129

CONNEALY TOBIN
BRAZILA OF CONANGA 3991 839A
REESHA OF CONANGA 1251

BON VIEW NEW DESIGN 208
DELIA OF CONANGA 667

CONNEALY DEEP CANYON 454
BREETA OF CONANGA 525

BE PD	WE PD	YE PD	SC	MILK	MAR B	RE
+4.5	+72	+125	+85	+19	+45	+43

A proven and widely used performance and phenotype sire.



Vision Unanimous 1418

D Vision Unanimous 1418

01/22/2011 • REG: #16992096 • 1418

GAMBLES ROYAL FLUSH
VISIONTOPLINE ROYAL STOCKMAN
LAGRAND PRIDE 7140

B C MARATHON 7022
CHAMPION HILL LADY 703

CONNELLY LEAD ON
T C PRIDE 8002

BOYD ON TARGET 1083
VISION EDELLA 665
VISION EDELLA 337

S A F 598 BANDO 5175
BOYD FOREVER LADY 7095

SYDGEN ON THE MARK
VISION EDELLA 1045

BEPD	WEPD	YEPD	SC	MILK	MARB	RE
+3.2	+73	+125	+95	+15	+53	+19

A proven heavy muscled performance sire.

909

Hoos Earnan 909

02/01/2019 • REG: #19552882 • 909

CONNELLY CONSENSUS
CONNELLY EARNAN 076E
BRAZILA OF CONANGA 3991 839A

KMK ALLIANCE 6595 I87
BLINDA OF CONANGA 004

CONNELLY TOBIN
BRESHA OF CONANGA 1251

H A R B HIGH PLAINS 975 JH
ALC HAZEL P92P
ALC HAZEL L12L

SITZ ALLIANCE 6595
JUANADA ERICA 9024 H A R B

S V F BANDOLIER
ALC HAZEL K14H

DISP
3

Act BW	ADJ WW	BW	WW	YW	MILK	Marb	RE	Fat	DAM NR
93	622	+1.9	+56	+104	+34	+31	+30	+027	106

The only Earnan in the sale!



Hoos Unanimous 911

910

Hoos Unanimous 910

01/24/2019 • REG: #19552883 • 910

VISIONTOPLINE ROYAL STOCKMAN
VISION UNANIMOUS 1418
VISION EDELLA 665

GAMBLES ROYAL FLUSH
LAGRAND PRIDE 7140

BOYD ON TARGET 1083
VISION EDELLA 337

H A R B HIGH PLAINS 975 JH
ALC HAZEL P92P
ALC HAZEL L12L

SITZ ALLIANCE 6595
JUANADA ERICA 9024 H A R B

S V F BANDOLIER
ALC HAZEL K14H

DISP
2

Act BW	ADJ WW	BW	WW	YW	MILK	Marb	RE	Fat	DAM NR
95	677	+1.4	+57	+98	+29	+31	+23	+039	106

Lots of muscle and eye appeal.

911

Hoos Unanimous 911

01/30/2019 • REG: #19552884 • 911

VISIONTOPLINE ROYAL STOCKMAN
VISION UNANIMOUS 1418
VISION EDELLA 665

GAMBLES ROYAL FLUSH
LAGRAND PRIDE 7140

BOYD ON TARGET 1083
VISION EDELLA 337

H A R B HIGH PLAINS 975 JH
ALC HAZEL P92P
ALC HAZEL L12L

SITZ ALLIANCE 6595
JUANADA ERICA 9024 H A R B

S V F BANDOLIER
ALC HAZEL K14H

DISP
2

Act BW	ADJ WW	BW	WW	YW	MILK	Marb	RE	Fat	DAM NR
91	653	+3.8	+67	+121	+28	+39	+67	+030	106

Absolutely a powerhouse!



Hoos Unanimous 910

912

Hoos Unanimous 912

01/30/2019 • REG: #19552885 • 912

VISIONTOPLINE ROYAL STOCKMAN
VISION UNANIMOUS 1418
VISION EDELLA 665

GAMBLES ROYAL FLUSH
LAGRAND PRIDE 7140

BOYD ON TARGET 1083
VISION EDELLA 337

H A R B HIGH PLAINS 975 JH
ALC HAZEL P92P
ALC HAZEL L12L

SITZ ALLIANCE 6595
JUANADA ERICA 9024 H A R B

S V F BANDOLIER
ALC HAZEL K14H

DISP
2

Act BW	ADJ WW	BW	WW	YW	MILK	Marb	RE	Fat	DAM NR
87	664	+1.9	+54	+96	+31	+07	+45	+042	106

Got a sticker in his eye, but a another real good Unanimous son.

913 Hoos Unanimous 913

02/01/2019 • REG: #19552886 • 913

VISIONTOPLINE ROYAL STOCKMAN
VISION UNANIMOUS 1418
VISION EDELLA 665

GAMBLES ROYAL FLUSH
LAGRAND PRIDE 7140

BOYD ON TARGET 1083
VISION EDELLA 337

H A R B HIGH PLAINS 975 JH
ALC HAZEL P92P
ALC HAZEL L12L

SITZ ALLIANCE 6595
JUANADA ERICA 9024 H A R B

S V F BANDOLIER
ALC HAZEL K14H

DISP
2

Act BW	ADJ WW	BW	WW	YW	MILK	Marb	RE	Fat
93	698	+2.9	+59	+98	+25	+26	+26	+035

DAM NR
106

Big topped and wide based with an extended front.



Hoos Beast Mode 914

914 Hoos Beast Mode 914

02/05/2019 • REG: #19552887 • 914

S A V 707 RITO 9969
DOUBLE R BAR RITO Y188
WHITSTONE LADY X087

RITO 707 OF IDEAL 3407 7075
BR POLLY 8077-472

G A R PREDESTINED
SINCLAIR LADY 2P61 4465

H A R B HIGH PLAINS 975 JH
ALC HAZEL P92P
ALC HAZEL L12L

SITZ ALLIANCE 6595
JUANADA ERICA 9024 H A R B

S V F BANDOLIER
ALC HAZEL K14H

DISP
3

Act BW	ADJ WW	BW	WW	YW	MILK	Marb	RE	Fat
97	690	+5.3	+55	+118	+32	+21	+83	-.007

DAM NR
106

A bigger framed performance bull. Y188 daughters are some of best.



Double R Bar Rito Y188

Donor

ALC Hazel P92P

03/04/2004 • REG: #15353015 • P92P

SITZ ALLIANCE 6595
H A R B HIGH PLAINS 975 JH
JUANADA ERICA 9024 H A R B

SITZ TRAVELER 8180
SITZ BARBARAMERE JET 2698

RITO 054 G D A R
G H JUANADA ERICA 664

S V F BANDOLIER
ALC HAZEL L12L
ALC HAZEL K14H

BON VIEW BANDO 598
S V F PRIMROSE LADY 9446

D H D TRAVELER 6807
A L C FOXY AGENT 61F

BE PD	WE PD	YE PD	SC	MILK	MARB	RE
+3.4	+43	+83	+30	+43	-.06	+.50

Her pedigree reads Sitz Alliance 6595, Bando 598 & Traveler 6807. It is no accident that she earned a 106 nursing ratio. Her dam was also the dam of the Select Sires bull, ALC Big Eye. She is the Donor dam of lots 909 through 914.

915 Hoos Summitt 915

02/11/2019 • REG: #19552888 • 915

RS A V RENOWN 3439
ZWT SUMMITT 6507
COLEMAN DONNA 714

RITO 707 OF IDEAL 3407 7075
S A V BLACKCAP MAY 4136

CONNELLY ONWARD
COLEMAN DONNA 386

IDEAL 5439 OF 1418 2455
HOOS DORA 224
HOOS DORA 727

IDEAL 1418 OF 8103 4286
IDEAL 2455 OF 9199 4293

RITO 4612 OF RITA 8G23 112
HOOS IRENE D71 OF 071

DISP
1

Act BW	ADJ WW	BW	WW	YW	MILK	Marb	RE	Fat
93	691	+1.7	+66	+114	+19	+13	+73	-.016

DAM NR
100

Real complete bull out of a proven eight year old cow.



Hoos Summitt 915

E Double R Bar Rito Y188

05/25/2011 • REG: #16969605 • Y188

R R RITO 707
RITO 707 OF IDEAL 3407 7075
S A V 707 RITO 9969
BR POLLY 8077-472

IDEAL 3407 OF 1418 076

PAPA EQUATOR 2928
VDAR POLLY 8077

G A R PREDESTINED
WHITSTONE LADY X087
SINCLAIR LADY 2P61 4465

B/R NEW DESIGN 036
G A R EXT 4206

N BAR PRIME TIME D806
IDEAL 4465 OF 6807 4286

BE PD	WE PD	YE PD	SC	MILK	MARB	RE
+5.2	+53	+111	+92	+25	+43	+68

We think Y188 is very unique! It is hard to find bulls that dramatically improve carcass, add performance in a powerful phenotype and make productive daughters. He does! He has 65 progeny that avg 103@yearling, 108@IMF and 102@ ribeye. His daughters have raised 48 calves with a nursing ratio of 101!



ZWT Summitt 6507

F ZWT Summitt 6507

04/24/2016 • REG: #18561289 • 6507

R R RITO 707
 IDEAL 3407 OF 1418 076
 RITO 707 OF IDEAL 3407 7075
 S A V RENOWN 3439
 S A V BLACKCAP MAY 4136 S A V 8180 TRAVELER 004
 S A V MAY 2397

CONNEALY ONWARD
 COLEMAN DONNA 714
 COLEMAN DONNA 386
 CONNEALY LEAD ON
 ALTUNE OF CONANGA 6104
 BASIN RAINMAKER 654X
 KMK DONNA J311

BE PD	WE PD	YE PD	SC	MILK	MARB	RE
+0	+63	+113	+49	+19	+26	+77

Summitt is a unique sire that combines two of the most prolific and well-known cows in the Angus breed, S A V Blackcap May 4136 and Coleman Donna 714.

916 Hoos Summitt 916

02/08/2019 • REG: #19552889 • 916

RS A V RENOWN 3439
 ZWT SUMMITT 6507
 COLEMAN DONNA 714
 RITO 707 OF IDEAL 3407 7075
 S A V BLACKCAP MAY 4136

CONNEALY ONWARD
 COLEMAN DONNA 386
 MARX 9723 SRT 601
 MARX PT QUEEN NANCY 0313

MARX TRUE GRIT 946
 HOOS MISS KATEE 236
 HOOS MISS KATEE 054
 CONNEALY SANDHILLS
 T K MISS KATEE N73

DISP
2

Act BW	ADJ WW	BW	WW	YW	MILK	Marb	RE	Fat	DAM NR
89	689	+3.1	+59	+100	+23	+23	+62	+019	108

His mother is one of our best. Good bull!

918 Hoos Compass 918

02/19/2019 • REG: #19556537 • 918

EF COMMANDO 1366
 BALDRIDGE COMPASS C041
 BALDRIDGE ISABEL Y69
 EF COMPLEMENT 8088
 RIVERBEND YOUNG LUCY W1470

STYLES UPGRADE J59
 BALDRIDGE ISABEL T935

MARX ALMIGHTY 811 3KG
 HOOS 338 OF 811 912
 HOOS 912 OF 5470 214
 S R NEW DESIGN 5072
 MARX PT DBL G ETHELDA 0211

IDEAL 5470 OF 2215 047
 IDEAL 214 OF 7451 806

DISP
2

Act BW	ADJ WW	BW	WW	YW	MILK	Marb	RE	Fat	DAM NR
108	746	+3.4	+68	+120	+31	+64	+52	+057	104

Should improve carcass & performance.

917 Hoos Compass 917

02/14/2019 • REG: #19556538 • 917

EF COMMANDO 1366
 BALDRIDGE COMPASS C041
 BALDRIDGE ISABEL Y69
 EF COMPLEMENT 8088
 RIVERBEND YOUNG LUCY W1470

STYLES UPGRADE J59
 BALDRIDGE ISABEL T935

MARX ALMIGHTY 811 3KG
 HOOS BLACKBIRD 335
 HOOS BLACKBIRD 005
 S R NEW DESIGN 5072
 MARX PT DBL G ETHELDA 0211

S A V FINAL ANSWER 0035
 HOOS BLACKBIRD 86

DISP
2

Act BW	ADJ WW	BW	WW	YW	MILK	Marb	RE	Fat	DAM NR
88	618	+2.3	+61	+107	+19	+34	+81	+021	99

Moderate birth weight bull with some shape.



Hoos Compass 917



Baldrige Compass C041

G Baldrige Compass C041

01/14/2015 • REG: #18229488 • C041

EF COMPLEMENT 8088
 EF COMMANDO 1366
 RIVERBEND YOUNG LUCY W1470
 BASIN FRANCHISE P142
 EF EVERELDA ENTENSE 6117
 B/R AMBUSH 28
 RIVERBEND YOUNG LUCY T1080

STYLES UPGRADE J59
 BALDRIDGE ISABEL Y69
 BALDRIDGE ISABEL T935
 SITZ UPWARD 307R
 PLAINVIEW LASSIE 71B
 BALDRIDGE KABOOM K243 KCF
 BALDRIDGE ISABEL P4527

BE PD	WE PD	YE PD	SC	MILK	MARB	RE
-.4	+63	+115	+63	+32	+90	+58

After seeing Compass in person he was a "must use" for me. He is very sound and attractive. His dam is one of the most prolific cows in the breed today. He is a sire that improves many of the economical traits and more.

919**Hoos Compass 919**

02/12/2019 • REG: #19556534 • 919

EF COMMANDO 1366
BALDRIDGE COMPASS C041
BALDRIDGE ISABEL Y69EF COMPLEMENT 8088
RIVERBEND YOUNG LUCY W1470STYLES UPGRADE J59
BALDRIDGE ISABEL T935DOUBLE R BAR RITO Y188
HOOS QUEEN 451
VERMILION QUEEN 1865S A V 707 RITO 9969
WHITESTONE LADY X087LEACHMAN RIGHT TIME
VERMILION QUEEN 7913

DISP
2

Act BW	ADJ WW	BW	WW	YW	MILK	Marb	RE	Fat	DAM NR
90	701	+2.7	+55	+103	+28	+58	+69	+0.06	104

A complete Compass son out of a massive Y188 daughter.

923**Hoos Compass 923**

02/10/2019 • REG: #19556530 • 923

EF COMMANDO 1366
BALDRIDGE COMPASS C041
BALDRIDGE ISABEL Y69EF COMPLEMENT 8088
RIVERBEND YOUNG LUCY W1470STYLES UPGRADE J59
BALDRIDGE ISABEL T935DOUBLE R BAR RITO Y188
HOOS DIXIE ERICA 654
HOOS DIXIE ERICA 209S A V 707 RITO 9969
WHITESTONE LADY X087KESSLERS FRONTMAN R001
HOOS DIXIE ERICA 013

DISP
2

Act BW	ADJ WW	BW	WW	YW	MILK	Marb	RE	Fat	DAM NR
73	653	+3.9	+80	+135	+30	+28	+91	-.024	99

Outstanding EPD's on this Compass son.

920**Hoos Compass 920**

02/12/2019 • REG: #19556535 • 920

EF COMMANDO 1366
BALDRIDGE COMPASS C041
BALDRIDGE ISABEL Y69EF COMPLEMENT 8088
RIVERBEND YOUNG LUCY W1470STYLES UPGRADE J59
BALDRIDGE ISABEL T935DOUBLE R BAR RITO Y188
HOOS FOREVER LADY 463
HOOS FOREVER LADY 724S A V 707 RITO 9969
WHITESTONE LADY X087WOODHILL FORESIGHT
P B FOREVER LADY 4171

DISP
2

Act BW	ADJ WW	BW	WW	YW	MILK	Marb	RE	Fat	DAM NR
99	674	+4.3	+63	+121	+32	+42	+62	+0.14	102

Lots of dimension. Also out of a productive Y188 daughter.

924**Hoos Incentive 924**

02/12/2019 • REG: #19552890 • 924

S A V INTERNATIONAL 2020
HOOS INCENTIVE 708 TE43
IDEAL 6313 OF 2Q23 4633S A V HARVESTOR 0338
S A V EMBLYNETTE 5483SINCLAIR OPEN RANGE 2Q23
IDEAL 4633 OF 452 281YON FUTURE FOCUS T219
HOOS EISA EVERGREEN 138
HOOS 628 EISA EVERGREENMYTTY IN FOCUS
YON HAZEL R133K C F BENNETT COALITION SCC
ER EISA EVERGREEN K215

DISP
2

Act BW	ADJ WW	BW	WW	YW	MILK	Marb	RE	Fat	DAM NR
91	638	+2.5	+54	+92	+25	+73	+68	+0.19	103

Moderate birthweight, powerfully constructed, and high marbling.

922**Hoos Compass 922**

02/14/2019 • REG: #19556531 • 922

EF COMMANDO 1366
BALDRIDGE COMPASS C041
BALDRIDGE ISABEL Y69EF COMPLEMENT 8088
RIVERBEND YOUNG LUCY W1470STYLES UPGRADE J59
BALDRIDGE ISABEL T935DOUBLE R BAR RITO Y188
HOOS MISS VIEWPOINT 642
HOOS MISS VIEWPOINT 314S A V 707 RITO 9969
WHITESTONE LADY X087CONNEALY FINAL PRODUCT
HOOS VIEWPOINT 121

DISP
2

Act BW	ADJ WW	BW	WW	YW	MILK	Marb	RE	Fat	DAM NR
66	600	+4	+52	+92	+28	+83	+46	+0.05	98

Heifer bull. Moderate framed with shome shape.

925**Hoos Incentive 925**

02/09/2019 • REG: #19552891 • 925

S A V INTERNATIONAL 2020
HOOS INCENTIVE 708 TE43
IDEAL 6313 OF 2Q23 4633S A V HARVESTOR 0338
S A V EMBLYNETTE 5483SINCLAIR OPEN RANGE 2Q23
IDEAL 4633 OF 452 281KESSLERS FRONTMAN R001
HOOS BLACKCAP 207
HOOS BLACKCAP 026CONNEALY FRONT PAGE 0228
KESSLERS BELL 0024IDEAL 7773 OF 332 3403
HOOS 608 BLACKCAP

DISP
1

Act BW	ADJ WW	BW	WW	YW	MILK	Marb	RE	Fat	DAM NR
91	643	+2.3	+51	+82	+26	+25	+35	+0.47	104

Deep and thick out of a real good Frontman cow.

H**Hoos Incentive 708 TE43**

02/06/2017 • REG: #18906761 • 708

S A V HARVESTOR 0338
S A V INTERNATIONAL 2020
S A V EMBLYNETTE 5483S A V HERITAGE 6295
S A V EMBLYNETTE 7749S A V 8180 TRAVELER 004
S A V EMBLYNETTE 7260SINCLAIR OPEN RANGE 2Q23
IDEAL 6313 OF 2Q23 4633
IDEAL 4633 OF 452 281RITO 616 OF 4B20 6807
S C C MAJESTY K024 853IDEAL 0452 OF 5439 467
IDEAL 281 OF 046 0142

BE PD	WE PD	YE PD	SC	MILK	MARB	RE
+6.6	+77	+129	+1.27	+23	+65	+59

Incentive was our lead off and high selling bull in 2018 purchased by Steve & Carol Bailus. We have raised some powerful performance bulls over the years and this guy rivals them all. His dam served as an embryo donor for Jorgensen's and then for us.

**Hoos Incentive 708 TE43**

926

Hoos Incentive 926

02/14/2019 • REG: #19552892 • 926

S A V INTERNATIONAL 2020
HOOS INCENTIVE 708 TE43
IDEAL 6313 OF 2Q23 4633

S A V HARVESTOR 0338
S A V EMBLYNETTE 5483
SINCLAIR OPEN RANGE 2Q23
IDEAL 4633 OF 452 281

KESSLERS FRONTMAN R001
HOOS PROUD LASSIE 211
GDH PROUD LASSIE 0107

CONNEALY FRONT PAGE 0228
KESSLERS BELL 0024
TC FRANKLIN 619
GDH PROUD LASSIE 8190

DISP
2

Act BW	ADJ WW	BW	WW	YW	MILK	Marb	RE	Fat	DAM NR
92	659	+2.8	+65	+108	+22	+27	+52	+008	101

Good hindquarter and lots of mass.



Hayden's High School Graduation
He now attends the University of NE Lincoln

927

Hoos Incentive 927

02/14/2019 • REG: #19552893 • 927

S A V INTERNATIONAL 2020
HOOS INCENTIVE 708 TE43
IDEAL 6313 OF 2Q23 4633

S A V HARVESTOR 0338
S A V EMBLYNETTE 5483
SINCLAIR OPEN RANGE 2Q23
IDEAL 4633 OF 452 281

SITZ THUNDERBOLT 0189
HOOS IRENE 212
HOOS IRENE 960

CONNEALY THUNDER
SITZ ELSIEMERE 1779
HA POWER BOX 6708
HOOS IRENE D71 OF 071

DISP
2

Act BW	ADJ WW	BW	WW	YW	MILK	Marb	RE	Fat	DAM NR
94	759	+3.7	+71	+113	+18	+60	-.01	+063	109

Powerful bull out of a fantastic cow. 2012 model cow nursing at 109.

930

Hoos Incentive 930

02/12/2019 • REG: #19552896 • 930

S A V INTERNATIONAL 2020
HOOS INCENTIVE 708 TE43
IDEAL 6313 OF 2Q23 4633

S A V HARVESTOR 0338
S A V EMBLYNETTE 5483
SINCLAIR OPEN RANGE 2Q23
IDEAL 4633 OF 452 281

SINCLAIR ADDED VALUE 5PV44
HOOS EVERELDA ENTENSE 529
HOOS EVERELDA ENTENSE 302

SINCLAIR NET PRESENT VALUE
N BAR ENCHANTRESS U131G
SUMMITCREST FOCUS 2U66
HOOS EVERELDA ENTENSE 159

DISP
2

Act BW	ADJ WW	BW	WW	YW	MILK	Marb	RE	Fat	DAM NR
97	823	+4.4	+83	+147	+25	+80	+52	+022	106

Gentle, big framed bull with lots of growth and marbling.

928

Hoos Incentive 928

02/06/2019 • REG: #19552894 • 928

S A V INTERNATIONAL 2020
HOOS INCENTIVE 708 TE43
IDEAL 6313 OF 2Q23 4633

S A V HARVESTOR 0338
S A V EMBLYNETTE 5483
SINCLAIR OPEN RANGE 2Q23
IDEAL 4633 OF 452 281

CONNEALY FINAL PRODUCT
HOOS QUEEN ELLA 508
HOOS 292 OF GURU 806

CONNEALY PRODUCT 568
EBONISTA OF CONANGA 471
BALDRIDGE GURU 427
IDEAL 806 OF 5201 503

DISP
2

Act BW	ADJ WW	BW	WW	YW	MILK	Marb	RE	Fat	DAM NR
86	636	+2.6	+57	+101	+18	+56	+54	+030	97

Should enhance quality grade.

931

Hoos Incentive 931

02/18/2019 • REG: #19552897 • 931

S A V INTERNATIONAL 2020
HOOS INCENTIVE 708 TE43
IDEAL 6313 OF 2Q23 4633

S A V HARVESTOR 0338
S A V EMBLYNETTE 5483
SINCLAIR OPEN RANGE 2Q23
IDEAL 4633 OF 452 281

CONNEALY ONWARD
HOOS 902 OF OW 022
IDEAL 022 OF 7451 701

CONNEALY LEAD ON
ALTUNE OF CONANGA 6104
IDEAL 7451 OF 8103 4465
IDEAL 701 OF 6807 503

DISP
1

Act BW	ADJ WW	BW	WW	YW	MILK	Marb	RE	Fat	DAM NR
98	616	+4.0	+61	+108	+33	+47	+65	+015	101

Out of a real good 2009 model cow.

929

Hoos Incentive 929

02/07/2019 • REG: #19552895 • 929

S A V INTERNATIONAL 2020
HOOS INCENTIVE 708 TE43
IDEAL 6313 OF 2Q23 4633

S A V HARVESTOR 0338
S A V EMBLYNETTE 5483
SINCLAIR OPEN RANGE 2Q23
IDEAL 4633 OF 452 281

SUMMITCREST FOCUS 2U66
HOOS EVERELDA ENTENSE 509
HOOS EVERELDA ENTENSE 339

MYTTY IN FOCUS
SUMMITCREST ELBA 1M17
MARX TRUE GRIT 946
HOOS EVERELDA ENTENSE 156

DISP
1

Act BW	ADJ WW	BW	WW	YW	MILK	Marb	RE	Fat	DAM NR
79	685	+1.7	+58	+95	+27	+45	+82	-.015	99

Lighter birthweight and lots of power.



Hoos Incentive 929



Hoos Amos 910

Hoos Amos 910

01/21/2009 • REG: #16423134 • 910

IDEAL 7451 OF 8103 4465
 IDEAL 3542 OF 7451 7417
 IDEAL 7417 OF 1418 4465

IDEAL 8103 OF ELDO 5110 5213
 IDEAL 4465 OF 6807 4286

IDEAL 1418 OF 8103 4286
 IDEAL 4465 OF 6807 4286

IDEAL 03 OF D806 806
 IDEAL 328 OF 03 820
 IDEAL 820 OF 5439 403

N BAR PRIME TIME D806
 IDEAL 806 OF 5201 503

IDEAL 5439 OF 1418 2455
 IDEAL 403 SUPER X 0340 8114

BEPD	WEPD	YEPD	SC	MILK	MARB	RE
+5.3	+68	+115	+35	+16	+18	+54

Amos was a man amongst boys in our 2009 calf crop, purchased by Pieper Land and Livestock. He consistently adds length of spine and performance in a very attractive package.

932

Hoos Amos 932

02/15/2019 • REG: #19552898 • 932

IDEAL 3542 OF 7451 7417
 HOOS AMOS 910
 IDEAL 328 OF 03 820

IDEAL 7451 OF 8103 4465
 IDEAL 7417 OF 1418 4465

IDEAL 03 OF D806 806
 IDEAL 820 OF 5439 403

IDEAL 5439 OF 1418 2455
 HOOS HAZEL 316
 ALC HAZEL P92P

IDEAL 1418 OF 8103 4286
 IDEAL 2455 OF 9199 4293

H A R B HIGH PLAINS 975 JH
 ALC HAZEL L12L

DISP
2

Act BW	ADJ WW	BW	WW	YW	MILK	Marb	RE	Fat
103	622	+5.7	+48	+87	+24	+0.8	+45	+014

DAM NR
99

Traces back to the P92P cow. Very maternal bred.



Hoos Amos 935

933

Hoos Amos 933

02/17/2019 • REG: #19552899 • 933

IDEAL 3542 OF 7451 7417
 HOOS AMOS 910
 IDEAL 328 OF 03 820

IDEAL 7451 OF 8103 4465
 IDEAL 7417 OF 1418 4465

IDEAL 03 OF D806 806
 IDEAL 820 OF 5439 403

IDEAL 0748 OF 332 JILT
 HOOS BLACKBIRD 500
 IDEAL 501 OF 9126 319

IDEAL 332 OF 049 8221
 IDEAL 357 OF 745 0253

WAR ALLIANCE 9126 6006
 IDEAL 319 OF 03 121

DISP
1

Act BW	ADJ WW	BW	WW	YW	MILK	Marb	RE	Fat
93	687	+5.2	+69	+116	+29	+34	+18	+046

DAM NR
102

Long spined and big hipped.

935

Hoos Amos 935

02/16/2019 • REG: #19552901 • 935

IDEAL 3542 OF 7451 7417
 HOOS AMOS 910
 IDEAL 328 OF 03 820

IDEAL 7451 OF 8103 4465
 IDEAL 7417 OF 1418 4465

IDEAL 03 OF D806 806
 IDEAL 820 OF 5439 403

IDEAL 0748 OF 332 JILT
 HOOS IRENE 533
 HOOS IRENE 212

IDEAL 332 OF 049 8221
 IDEAL 357 OF 745 0253

SITZ THUNDERBOLT 0189
 HOOS IRENE 960

DISP
1

Act BW	ADJ WW	BW	WW	YW	MILK	Marb	RE	Fat
107	770	+4.8	+78	+132	+25	+31	+22	+028

DAM NR
108

Long, heavy muscled, performance enhancer.

934

Hoos Amos 934

02/18/2019 • REG: #19552900 • 934

IDEAL 3542 OF 7451 7417
 HOOS AMOS 910
 IDEAL 328 OF 03 820

IDEAL 7451 OF 8103 4465
 IDEAL 7417 OF 1418 4465

IDEAL 03 OF D806 806
 IDEAL 820 OF 5439 403

IDEAL 0748 OF 332 JILT
 HOOS ELBA 522
 MARX BUBBA ELBA 0101

IDEAL 332 OF 049 8221
 IDEAL 357 OF 745 0253

MARCYS 95 SUPREME 7
 MARX 146 ELBA 9320

DISP
1

Act BW	ADJ WW	BW	WW	YW	MILK	Marb	RE	Fat
96	731	+4.2	+68	+120	+18	+27	+12	+056

DAM NR
102

Length adds pounds, docile.



Hoos Amos 935



Hoos Amos 936

936

Hoos Amos 936

02/12/2019 • REG: #19552902 • 936

IDEAL 3542 OF 7451 7417
HOOS AMOS 910
IDEAL 328 OF 03 820

IDEAL 7451 OF 8103 4465
IDEAL 7417 OF 1418 4465
IDEAL 03 OF D806 806
IDEAL 820 OF 5439 403

CONNEALY STINGRAY 9618
HOOS FOREVER LADY 605
HOOS FOREVER LADY 463

CONNEALY FINAL SOLUTION
POWA OF CONANGA 9618
DOUBLE R BAR RITO Y188
HOOS FOREVER LADY 724

DISP
2

Act BW	ADJ WW	BW	WW	YW	MILK	Marb	RE	Fat	DAM NR
66	652	+5	+63	+104	+22	+38	+39	+004	100

Heifer bull and a good one!

937

Hoos Amos 937

02/12/2019 • REG: #19552903 • 937

IDEAL 3542 OF 7451 7417
HOOS AMOS 910
IDEAL 328 OF 03 820

IDEAL 7451 OF 8103 4465
IDEAL 7417 OF 1418 4465
IDEAL 03 OF D806 806
IDEAL 820 OF 5439 403

S R RESOURCE 415
HOOS PRINCESS 628
IDEAL 346 OF 03 013

S A V RESOURCE 1441
S R BLACKCAP 702

IDEAL 03 OF D806 806
IDEAL 013 OF 5439 514

DISP
1

Act BW	ADJ WW	BW	WW	YW	MILK	Marb	RE	Fat	DAM NR
85	594	+4.6	+48	+82	+14	+06	+58	+003	92

Amos is making some beautiful daughters.

938

Hoos Amos 938

02/19/2019 • REG: #19552904 • 938

IDEAL 3542 OF 7451 7417
HOOS AMOS 910
IDEAL 328 OF 03 820

IDEAL 7451 OF 8103 4465
IDEAL 7417 OF 1418 4465
IDEAL 03 OF D806 806
IDEAL 820 OF 5439 403

HOOS BLACKCAT 361
HOOS BLACKCAP 630
HOOS 342 OF 6807 5138

IDEAL 0748 OF 332 JILT
HOOS IDA 021

D H D TRAVELER 6807
IDEAL 5138 OF WW RITO 1247

DISP
1

Act BW	ADJ WW	BW	WW	YW	MILK	Marb	RE	Fat	DAM NR
111	757	+8.5	+86	+150	+18	+26	+72	+024	107

Looking to add pounds at weaning time?

940

Hoos Amos 940

02/16/2019 • REG: #19552905 • 940

IDEAL 3542 OF 7451 7417
HOOS AMOS 910
IDEAL 328 OF 03 820

IDEAL 7451 OF 8103 4465
IDEAL 7417 OF 1418 4465
IDEAL 03 OF D806 806
IDEAL 820 OF 5439 403

IDEAL 332 OF 049 8221
HOOS QUEEN ELLA 653
IDEAL 608 OF 338 022

IDEAL 049 OF F506 6375
IDEAL 8221 OF 5439 4517

HYLINE RIGHT TIME 338
IDEAL 022 OF 7451 701

DISP
1

Act BW	ADJ WW	BW	WW	YW	MILK	Marb	RE	Fat	DAM NR
79	673	+2.0	+60	+109	+29	+48	+44	+016	104

Dam is an excellent young cow resulting from the 332 x 608 flush.

999

Hoos Amos 999

02/18/2019 • REG: #19552939 • 999

IDEAL 3542 OF 7451 7417
HOOS AMOS 910
IDEAL 328 OF 03 820

IDEAL 7451 OF 8103 4465
IDEAL 7417 OF 1418 4465
IDEAL 03 OF D806 806
IDEAL 820 OF 5439 403

DOUBLE R BAR RITO Y188
HOOS PRINCESS 671
HOOS 070 OF 832T 019

S A V 707 RITO 9969
WHITESTONE LADY X087

LAR IMAGE 832T
IDEAL 019 OF 5439 514

DISP
1

Act BW	ADJ WW	BW	WW	YW	MILK	Marb	RE	Fat	DAM NR
78	680	+2.8	+57	+104	+28	+44	+45	-.009	107

Low birth Amos son.

941

Hoos Powerpoint 941

02/10/2019 • REG: #19552906 • 941

IDEAL 3542 OF 7451 7417
HOOS AMOS 910
IDEAL 328 OF 03 820

IDEAL 7451 OF 8103 4465
IDEAL 7417 OF 1418 4465
IDEAL 03 OF D806 806
IDEAL 820 OF 5439 403

S R RESOURCE 415
HOOS PRINCESS 628
IDEAL 346 OF 03 013

S A V RESOURCE 1441
S R BLACKCAP 702

IDEAL 03 OF D806 806
IDEAL 013 OF 5439 514

DISP
1

Act BW	ADJ WW	BW	WW	YW	MILK	Marb	RE	Fat	DAM NR
85	594	+4.6	+48	+82	+14	+06	+58	+003	92

Amos is making some beautiful daughters.

TEHAMA REVERE
S POWERPOINT WS 5503
S QUEEN ESSA 248

D R SIERRA CUT 7404
TEHAMA ELITE BLACKBIRD T003

S SUMMIT 956
S QUEEN ESSA 0131

CONNEALY STINGRAY 9618
HOOS NELLY 713
HOOS NELLY 536

CONNEALY FINAL SOLUTION
POWA OF CONANGA 9618

IDEAL 0748 OF 332 JILT
HOOS NELLY 208

DISP
2

Act BW	ADJ WW	BW	WW	YW	MILK	Marb	RE	Fat	DAM NR
73	595	+1.4	+55	+96	+19	+64	+22	+021	98

Heifer bull.

943

Hoos Powerpoint 943

02/08/2019 • REG: #19552908 • 943

IDEAL 3542 OF 7451 7417
HOOS AMOS 910
IDEAL 328 OF 03 820

IDEAL 7451 OF 8103 4465
IDEAL 7417 OF 1418 4465
IDEAL 03 OF D806 806
IDEAL 820 OF 5439 403

HOOS BLACKCAT 361
HOOS BLACKCAP 630
HOOS 342 OF 6807 5138

IDEAL 0748 OF 332 JILT
HOOS IDA 021

D H D TRAVELER 6807
IDEAL 5138 OF WW RITO 1247

DISP
1

Act BW	ADJ WW	BW	WW	YW	MILK	Marb	RE	Fat	DAM NR
111	757	+8.5	+86	+150	+18	+26	+72	+024	107

Looking to add pounds at weaning time?

TEHAMA REVERE
S POWERPOINT WS 5503
S QUEEN ESSA 248

D R SIERRA CUT 7404
TEHAMA ELITE BLACKBIRD T003

S SUMMIT 956
S QUEEN ESSA 0131

S A V RENOWN 3439
HOOS ERICA 715
HOOS ERICA 152

RITO 707 OF IDEAL 3407 7075
S A V BLACKCAP MAY 4136

MARX 0211 DBL G NEW B 713
HOOS ERICA 716

DISP
2

Act BW	ADJ WW	BW	WW	YW	MILK	Marb	RE	Fat	DAM NR
95	636	+5.5	+80	+134	+19	+35	+52	+032	105

Very stylish growth bull.



S Powerpoint WS 5503

J S Powerpoint WS 5503

02/19/2015 • REG: #18159093 • 5503

TEHAMA REVERE

D R SIERRA CUT 7404
TEHAMA ELITE BLACKBIRD T003
S A V FINAL ANSWER 0035
TEHAMA ELITE BLACKBIRD R857

S QUEEN ESSA 248
S QUEEN ESSA 0131

G A R RETAIL PRODUCT
D R DOBRA 3453

GDAR GAME DAY 449
S PRIDE ANNA 709

BROOKS EXT 792
S QUEEN ESSA 529

BE PD	WE PD	YE PD	SC	MILK	MARB	RE
-.8	+65	+114	+05	+.22	+.95	+.33

Powerpoint offers an outcross pedigree for calving ease and marbling.

944 Hoos Powerpoint 944

02/16/2019 • REG: #19552909 • 944

TEHAMA REVERE
S POWERPOINT WS 5503
S QUEEN ESSA 248

D R SIERRA CUT 7404
TEHAMA ELITE BLACKBIRD T003

S SUMMIT 956
S QUEEN ESSA 0131

S A V RENOWN 3439
HOOS QUEEN ELLA 716
HOOS 172 OF 713 022

RITO 707 OF IDEAL 3407 7075
S A V BLACKCAP MAY 4136

MARX 0211 DBL G NEW B 713
IDEAL 022 OF 7451 701

DISP
2

Act BW	ADJ WW	BW	WW	YW	MILK	Marb	RE	Fat
73	662	+1.4	+68	+116	+26	+.45	+.44	+.063

DAM NR
109

Heifer bull.



Hoos Powerpoint 948

945 Hoos Powerpoint 945

02/05/2019 • REG: #19552910 • 945

TEHAMA REVERE
S POWERPOINT WS 5503
S QUEEN ESSA 248

D R SIERRA CUT 7404
TEHAMA ELITE BLACKBIRD T003

S SUMMIT 956
S QUEEN ESSA 0131

JSK MIRROR IMAGE 1507
HOOS WESTWING 742
HOOS WESTWING 525

W R A MIRROR IMAGE Z11
JSK LASS 1313

CONNEALY FINAL PRODUCT
HOOS 270 OF 811 P03

DISP
2

Act BW	ADJ WW	BW	WW	YW	MILK	Marb	RE	Fat
52	554	-1.7	+52	+96	+21	+.79	+.27	+.054

DAM NR
91

Heifer bull with short ears.

948 Hoos Powerpoint 948

02/13/2019 • REG: #19552912 • 948

TEHAMA REVERE
S POWERPOINT WS 5503
S QUEEN ESSA 248

D R SIERRA CUT 7404
TEHAMA ELITE BLACKBIRD T003

S SUMMIT 956
S QUEEN ESSA 0131

HOOS AMOS 910
HOOS IDA 766
HOOS IDA 021

IDEAL 3542 OF 7451 7417
IDEAL 328 OF 03 820

MYTTY IN FOCUS
HOOS IDA 822

DISP
1

Act BW	ADJ WW	BW	WW	YW	MILK	Marb	RE	Fat
68	691	-.6	+65	+120	+22	+1.24	+.42	+.062

DAM NR
114

Heifer bull. Outstanding DNA profile. We will keep a semen interest!

946 Hoos Powerpoint 946

02/05/2019 • REG: #19552911 • 946

TEHAMA REVERE
S POWERPOINT WS 5503
S QUEEN ESSA 248

D R SIERRA CUT 7404
TEHAMA ELITE BLACKBIRD T003

S SUMMIT 956
S QUEEN ESSA 0131

IDEAL 332 OF 049 8221
HOOS LADY 757
IDEAL 6313 OF 2Q23 4633

IDEAL 049 OF F506 6375
IDEAL 8221 OF 5439 4517

SINCLAIR OPEN RANGE 2Q23
IDEAL 4633 OF 452 281

DISP
2

Act BW	ADJ WW	BW	WW	YW	MILK	Marb	RE	Fat
67	681	+0	+63	+112	+29	+.79	+.18	+.054

DAM NR
112

Heifer bull with a stylish design.

949 Hoos Powerpoint 949

02/14/2019 • REG: #19552913 • 949

TEHAMA REVERE
S POWERPOINT WS 5503
S QUEEN ESSA 248

D R SIERRA CUT 7404
TEHAMA ELITE BLACKBIRD T003

S SUMMIT 956
S QUEEN ESSA 0131

HOOS AMOS 910
HOOS QUEEN 768
HOOS 282 OF 946 015

IDEAL 3542 OF 7451 7417
IDEAL 328 OF 03 820

MARX TRUE GRIT 946
HOOS 015 OF 7773 519

DISP
2

Act BW	ADJ WW	BW	WW	YW	MILK	Marb	RE	Fat
86	747	+3.0	+79	+137	+23	+.55	+.30	+.079

DAM NR
123

Outstanding performance, EPD's and phenotype.



Connealy Comrade 1385

K Connealy Comrade 1385

02/02/2011 • REG: #17031465 • 1385

CONNEALY CONSENSUS
CONNEALY CONSENSUS 7229
BLUE LILLY OF CONANGA 16

KMK ALLIANCE 6595 187
BLINDA OF CONANGA 004
WOODHILL ADMIRAL 77K
BLUE CASH OF CONANGA 6020

G A R NEW DESIGN 5050
HAPPY GEE OF CONANGA 919
HAP GINA OF CONANGA 260 4965

B/R NEW DESIGN 036
G A R PRECISION 706
BALDRIDGE KABOOM K243 KCF
HAPPY GRILL OF CONANGA 6260

BE PD	WE PD	YE PD	SC	MILK	MARB	RE
-3.5	+46	+90	+21	+28	+61	+64

A proven calving ease sire. These cattle are very docile. The females are moderate, easy fleshing and productive.

952 Hoos Comrade 952

02/06/2019 • REG: #19556323 • 952

CONNEALY CONSENSUS 7229
CONNEALY COMRADE 1385
HAPPY GEE OF CONANGA 919

CONNEALY CONSENSUS
BLUE LILLY OF CONANGA 16
G A R NEW DESIGN 5050
HAP GINA OF CONANGA 260 4965

IDEAL 7407 OF 1418 4465
HOOS QUEEN ELLA 783
IDEAL 507 OF 7451 806

IDEAL 1418 OF 8103 4286
IDEAL 4465 OF 6807 4286

IDEAL 7451 OF 8103 4465
IDEAL 806 OF 5201 503

DISP
1

Act BW	ADJ WW	BW	WW	YW	MILK	Marb	RE	Fat	DAM NR
70	571	-1.0	+43	+78	+27	+76	+43	+041	94

Heifer bull. Moderate with some muscle.



Hoos Comrade 956

953 Hoos Comrade 953

02/08/2019 • REG: #19556302 • 953

CONNEALY CONSENSUS 7229
CONNEALY COMRADE 1385
HAPPY GEE OF CONANGA 919

CONNEALY CONSENSUS
BLUE LILLY OF CONANGA 16
G A R NEW DESIGN 5050
HAP GINA OF CONANGA 260 4965

S A V REGISTRY 2831
HOOS QUEEN ELLA 727
IDEAL 507 OF 7451 806

RITO 707 OF IDEAL 3407 7075
S A V MADAME PRIDE 0075

IDEAL 7451 OF 8103 4465
IDEAL 806 OF 5201 503

DISP
1

Act BW	ADJ WW	BW	WW	YW	MILK	Marb	RE	Fat	DAM NR
58	596	-1.0	+48	+83	+25	+44	+47	+018	98

Heifer bull. Comrade's are very consistent.

956 Hoos Comrade 956

01/30/2019 • REG: #19556314 • 956

CONNEALY CONSENSUS 7229
CONNEALY COMRADE 1385
HAPPY GEE OF CONANGA 919

CONNEALY CONSENSUS
BLUE LILLY OF CONANGA 16
G A R NEW DESIGN 5050
HAP GINA OF CONANGA 260 4965

S A V INTERNATIONAL 2020
HOOS LADY 751
IDEAL 6313 OF 2Q23 4633

S A V HARVESTOR 0338
S A V EMBLYNETTE 5483

SINCLAIR OPEN RANGE 2Q23
IDEAL 4633 OF 452 281

DISP
1

Act BW	ADJ WW	BW	WW	YW	MILK	Marb	RE	Fat	DAM NR
68	598	+9	+59	+106	+37	+33	+60	+003	99

Heifer bull. Should make excellent daughters. His mother is a full sister to Incentive.

955 Hoos Comrade 955

02/02/2019 • REG: #19595199 • 955

CONNEALY CONSENSUS 7229
CONNEALY COMRADE 1385
HAPPY GEE OF CONANGA 919

CONNEALY CONSENSUS
BLUE LILLY OF CONANGA 16
G A R NEW DESIGN 5050
HAP GINA OF CONANGA 260 4965

S A V INTERNATIONAL 2020
HOOS QUEEN ELLA 749
IDEAL 507 OF 7451 806

S A V HARVESTOR 0338
S A V EMBLYNETTE 5483

IDEAL 7451 OF 8103 4465
IDEAL 806 OF 5201 503

DISP
1

Act BW	ADJ WW	BW	WW	YW	MILK	Marb	RE	Fat	DAM NR
60	669	-1.8	+54	+100	+35	+25	+88	-001	100

Heifer bull. Heaviest weaning Comrade.

957 Hoos Comrade 957

02/08/2019 • REG: #19556308 • 957

CONNEALY CONSENSUS 7229
CONNEALY COMRADE 1385
HAPPY GEE OF CONANGA 919

CONNEALY CONSENSUS
BLUE LILLY OF CONANGA 16
G A R NEW DESIGN 5050
HAP GINA OF CONANGA 260 4965

S A V INTERNATIONAL 2020
HOOS LADY 756
IDEAL 6313 OF 2Q23 4633

S A V HARVESTOR 0338
S A V EMBLYNETTE 5483

SINCLAIR OPEN RANGE 2Q23
IDEAL 4633 OF 452 281

DISP
2

Act BW	ADJ WW	BW	WW	YW	MILK	Marb	RE	Fat	DAM NR
83	614	+7	+60	+105	+24	+76	+71	+012	101

Possible heifer bull, has some length and shape.



JGM Core Values 5G11

L JGM Core Values 5G11

04/05/2015 • REG: #18650469 • 5G11

BOYD NEW DAY 8005
GDAR GAME DAY 449
G D A R MISS WIX 474

A A R NEW TREND
S V F FOREVER LADY 57D
TEHAMA BAND 207
G D A R MISS WIX 749

H A IMAGE MAKER 0415
JGM PROUD ERIKA 1H1
JGM PROUD ERIKA 9M11

HERO 6267 OF R R 2418
H A RITO BLACKCAP 9038
O C C EMBLAZON 854E
J G M LADY ERIKA L S 016

BE PD	WE PD	YE PD	SC	MILK	MARB	RE
-.2	+62	+100	+.72	+32	+.55	+.46

We purchased this bull from Jeremy & Gail Martin. We have used him to clean up our heifers the last two years and selected some power cows to sample him on. His pedigree stacks maternal production. He had an individual IMF ratio of 120. His progeny are very attractive with all 3 dimensions.

958 Hoos Comrade 958

02/07/2019 • REG: #19556299 • 958

CONNEALY CONSENSUS 7229
CONNEALY COMRADE 1385
HAPPY GEE OF CONANGA 919

CONNEALY CONSENSUS
BLUE LILLY OF CONANGA 16

G A R NEW DESIGN 5050
HAP GINA OF CONANGA 260 4965

RITO 707 OF IDEAL 3407 7075
S A V MADAME PRIDE 0075

S A V REGISTRY 2831
HOOS QUEEN ELLA 759
IDEAL 507 OF 7451 806

IDEAL 7451 OF 8103 4465
IDEAL 806 OF 5201 503

DISP
1

Act BW	ADJ WW	BW	WW	YW	MILK	Marb	RE	Fat	DAM NR
58	638	+.4	+.55	+.90	+.21	+.58	+.53	+.020	105

Heifer bull with some dimension.

962 Hoos Core Values 962

03/04/2019 • REG: #19552914 • 962

GDAR GAME DAY 449
JGM CORE VALUES 5G11
JGM PROUD ERIKA 1H1

BOYD NEW DAY 8005
G D A R MISS WIX 474

H A IMAGE MAKER 0415
JGM PROUD ERIKA 9M11

SITZ UPWARD 307R
EXAR NEW DESIGN 4212

V A R UPFRONT 0392
HOOS PROUD LASSIE 709
HOOS PROUD LASSIE 545

MARX ALMIGHTY 811 3KG
HOOS PROUD LASSIE 211

DISP
2

Act BW	ADJ WW	BW	WW	YW	MILK	Marb	RE	Fat	DAM NR
83	709	+.25	+.69	+.107	+.25	+.34	+.88	-.014	117

Should work on bigger heifers. Excellent performance!

959 Hoos Comrade 959

02/07/2019 • REG: #19556317 • 959

CONNEALY CONSENSUS 7229
CONNEALY COMRADE 1385
HAPPY GEE OF CONANGA 919

CONNEALY CONSENSUS
BLUE LILLY OF CONANGA 16

G A R NEW DESIGN 5050
HAP GINA OF CONANGA 260 4965

IDEAL 1418 OF 8103 4286
IDEAL 4465 OF 6807 4286

IDEAL 7407 OF 1418 4465
HOOS QUEEN ELLA 784
IDEAL 507 OF 7451 806

IDEAL 7451 OF 8103 4465
IDEAL 806 OF 5201 503

DISP
1

Act BW	ADJ WW	BW	WW	YW	MILK	Marb	RE	Fat	DAM NR
68	647	-.8	+.53	+.87	+.22	+.33	+.40	-.006	107

Heifer bull with some performance.

963 Hoos Core Values 963

03/30/2019 • REG: #19552915 • 963

GDAR GAME DAY 449
JGM CORE VALUES 5G11
JGM PROUD ERIKA 1H1

BOYD NEW DAY 8005
G D A R MISS WIX 474

H A IMAGE MAKER 0415
JGM PROUD ERIKA 9M11

S A V RESOURCE 1441
S R BLACKCAP 702

S R RESOURCE 415
HOOS BLACKBIRD 722
HOOS BLACKBIRD 335

MARX ALMIGHTY 811 3KG
HOOS BLACKBIRD 005

DISP
2

Act BW	ADJ WW	BW	WW	YW	MILK	Marb	RE	Fat	DAM NR
85	689	+.25	+.74	+.133	+.21	+.52	+.52	+.028	114

Should work on bigger heifers. Small head and smooth shouldered.

960 Hoos Comrade 960

02/04/2019 • REG: #19556319 • 960

CONNEALY CONSENSUS 7229
CONNEALY COMRADE 1385
HAPPY GEE OF CONANGA 919

CONNEALY CONSENSUS
BLUE LILLY OF CONANGA 16

G A R NEW DESIGN 5050
HAP GINA OF CONANGA 260 4965

IDEAL 1418 OF 8103 4286
IDEAL 4465 OF 6807 4286

IDEAL 7407 OF 1418 4465
HOOS QUEEN ELLA 786
IDEAL 507 OF 7451 806

IDEAL 7451 OF 8103 4465
IDEAL 806 OF 5201 503

DISP
1

Act BW	ADJ WW	BW	WW	YW	MILK	Marb	RE	Fat	DAM NR
59	532	-1.2	+.49	+.86	+.38	+.59	+.56	-.011	88

Heifer bull with short ears.



Hannah and Ted working cows

964 Hoos Core Values 964

03/24/2019 • REG: #19552946 • 964

GDAR GAME DAY 449
JGM CORE VALUES 5G11
JGM PROUD ERIKA 1H1

BOYD NEW DAY 8005
G D A R MISS WIX 474

H A IMAGE MAKER 0415
JGM PROUD ERIKA 9M11

S A V RESOURCE 1441
S R BLACKCAP 702

S R RESOURCE 415
HOOS BLACKBIRD 726
BLC L EDITION DIVIDEND 619

HOFF LIMITED EDITION S C 594
BLC GRMAKER DIVIDEND 149

DISP
2

Act BW	ADJ WW	BW	WW	YW	MILK	Marb	RE	Fat	DAM NR
71	674	+7	+64	+108	+31	+26	+41	-.006	111

Younger heifer bull.



Hadleigh at the 4H Horse Show

965 Hoos Core Values 965

03/28/2019 • REG: #19552947 • 965

GDAR GAME DAY 449
JGM CORE VALUES 5G11
JGM PROUD ERIKA 1H1

BOYD NEW DAY 8005
G D A R MISS WIX 474

H A IMAGE MAKER 0415
JGM PROUD ERIKA 9M11

S A V REGISTRY 2831
IDEAL 608 OF 338 022

HOOS REGISTRY 511
HOOS BLACKBIRD 746
HOOS BLACKBIRD 530

SINCLAIR ADDED VALUE 5PV44
HOOS 337 OF 0748 319

DISP
2

Act BW	ADJ WW	BW	WW	YW	MILK	Marb	RE	Fat	DAM NR
82	691	+2.7	+83	+132	+21	+47	+32	+0.039	114

Should work on bigger heifers. Clean fronted.

967 Hoos Core Values 967

03/25/2019 • REG: #19552917 • 967

GDAR GAME DAY 449
JGM CORE VALUES 5G11
JGM PROUD ERIKA 1H1

BOYD NEW DAY 8005
G D A R MISS WIX 474

H A IMAGE MAKER 0415
JGM PROUD ERIKA 9M11

IDEAL 0748 OF 332 JILT
HOOS IDA 021

HOOS BLACKCAT 361
HOOS IRENE 765
HOOS IRENE 450

DOUBLE R BAR RITO Y183
HOOS IRENE 212

DISP
2

Act BW	ADJ WW	BW	WW	YW	MILK	Marb	RE	Fat	DAM NR
83	699	+2.9	+66	+108	+32	+0.06	+72	+0.007	115

Young bull with lots of performance and style.

966 Hoos Core Values 966

02/11/2019 • REG: #19552916 • 966

GDAR GAME DAY 449
JGM CORE VALUES 5G11
JGM PROUD ERIKA 1H1

BOYD NEW DAY 8005
G D A R MISS WIX 474

H A IMAGE MAKER 0415
JGM PROUD ERIKA 9M11

S A V HARVESTOR 0338
S A V EMBLYNETTE 5483

S A V INTERNATIONAL 2020
HOOS QUEEN ELLA 754
IDEAL 507 OF 7451 806

IDEAL 7451 OF 8103 4465
IDEAL 806 OF 5201 503

DISP
2

Act BW	ADJ WW	BW	WW	YW	MILK	Marb	RE	Fat	DAM NR
82	658	+2.4	+65	+102	+25	+0	+74	+0.006	108

Should work on bigger heifers and make real productive daughters.

968 Hoos Core Values 968

03/28/2019 • REG: #COMMERCIAL • 968

GDAR GAME DAY 449
JGM CORE VALUES 5G11
JGM PROUD ERIKA 1H1

BOYD NEW DAY 8005
G D A R MISS WIX 474

H A IMAGE MAKER 0415
JGM PROUD ERIKA 9M11

HOOS 787

DISP
2

Act BW	ADJ WW	BW	WW	YW	MILK	Marb	RE	Fat	DAM NR
77	667								N/A

Heifer bull. Sells has commercial; we had some DNA mix up on his dam.



Lain Tausan and his 2019 deer

970 Hoos Marriott 970

03/05/2019 • REG: #19552918 • 970

MARRIOTT OF WR BAR 8055
TRW MARRIOTT 703
T R W ERICA 711 ALL 187 013

SKARSHIP SARATOGA
F W R 6298 LADY ELBAN 543

T R W ALLIANCE 187 711
T R W ERICA ALLIANCE 6164

NCC MACARTHUR 4216
HOOS EISA ERICA 736
HOOS EISA EVERGREEN 138

O C C GENERAL 794G
N77R JUANADA 8007 604N

YON FUTURE FOCUS T219
HOOS 628 EISA EVERGREEN

DISP
1

Act BW	ADJ WW	BW	WW	YW	MILK	Marb	RE	Fat	DAM NR
81	577	+2.2	+53	+96	+16	+0.01	+42	+0.009	95

Should work on bigger heifers. Nice little head and smooth made.



Ideal 8561 of 4545 4704

M Ideal 8561 of 4545 4704

02/08/2008 • REG: #16137281 • 8561

IDEAL 7451 OF 8103 4465
 IDEAL 4545 OF 7451 6224
 IDEAL 6224 OF 306 4231

IDEAL 8103 OF ELDO 5110 5213
 IDEAL 4465 OF 6807 4286

B F RAINDANCER 012 306
 IDEAL 4231 OF 033 1467

IDEAL 2300 OF T510 3401
 IDEAL 4704 OF 2300 2358
 IDEAL 2358 OF 7573 759

S S TRAVELER 6807 T510
 IDEAL 3401 OF 1418 65

IDEAL 7573 OF 544 988
 IDEAL 759 OF 544 5307

BE PD	WE PD	YE PD	SC	MILK	MAR B	RE
+3.8	+45	+74	+58	+30	-.02	+19

We purchased 8561 at 10 years of age from Dan Duffy. We used him to naturally service our cows at the ages of 10 & 11. Jorgensen genetics with outstanding feet and leg structure and longevity! Energizer should produce you some cattle that keep going & going.

971 Hoos Energizer 971

02/20/2019 • REG: #19552919 • 971

IDEAL 4545 OF 7451 6224
 IDEAL 8561 OF 4545 4704
 IDEAL 4704 OF 2300 2358

IDEAL 7451 OF 8103 4465
 IDEAL 6224 OF 306 4231

IDEAL 2300 OF T510 3401
 IDEAL 2358 OF 7573 759

CONNELLY FRONT PAGE 0228
 KESSLERS BELL 0024

KESSLERS FRONTMAN R001
 HOOS HAZEL 112
 HOOS HAZEL 965

S A V FINAL ANSWER 0035
 ALC HAZEL P92P

DISP
1

Act BW	ADJ WW	BW	WW	YW	MILK	Marb	RE	Fat	DAM NR
93	684	+2.4	+56	+90	+39	-.16	+.23	+.027	109

8561 out of a super productive 2011 model cow.

974 Hoos Energizer 974

03/29/2019 • REG: #19552922 • 974

IDEAL 4545 OF 7451 6224
 IDEAL 8561 OF 4545 4704
 IDEAL 4704 OF 2300 2358

IDEAL 7451 OF 8103 4465
 IDEAL 6224 OF 306 4231

IDEAL 2300 OF T510 3401
 IDEAL 2358 OF 7573 759

IDEAL 332 OF 049 8221
 IDEAL 357 OF 745 0253

IDEAL 0748 OF 332 JILT
 HOOS 262 OF 0748 527
 IDEAL 527 OF 1576 121

IDEAL 1576 OF 7451 6187
 IDEAL 121 OF 901 506

DISP
2

Act BW	ADJ WW	BW	WW	YW	MILK	Marb	RE	Fat	DAM NR
87	654	+3.0	+53	+89	+30	+.22	+.07	+.023	100

A super sound bull lined with Jorgensen genetics.

972 Hoos Energizer 972

03/02/2019 • REG: #19552920 • 972

IDEAL 4545 OF 7451 6224
 IDEAL 8561 OF 4545 4704
 IDEAL 4704 OF 2300 2358

IDEAL 7451 OF 8103 4465
 IDEAL 6224 OF 306 4231

IDEAL 2300 OF T510 3401
 IDEAL 2358 OF 7573 759

CONNELLY FRONT PAGE 0228
 KESSLERS BELL 0024

KESSLERS FRONTMAN R001
 HOOS DIXIE ERICA 209
 HOOS DIXIE ERICA 013

MYTTY IN FOCUS
 HOOS DIXIE ERICA 812

DISP
1

Act BW	ADJ WW	BW	WW	YW	MILK	Marb	RE	Fat	DAM NR
92	739	+3.5	+63	+101	+28	+.44	+.26	+.032	112

High performing 8561 out of a great cow.

975 Hoos Energizer 975

03/01/2019 • REG: #19552923 • 975

IDEAL 4545 OF 7451 6224
 IDEAL 8561 OF 4545 4704
 IDEAL 4704 OF 2300 2358

IDEAL 7451 OF 8103 4465
 IDEAL 6224 OF 306 4231

IDEAL 2300 OF T510 3401
 IDEAL 2358 OF 7573 759

IDEAL 332 OF 049 8221
 IDEAL 357 OF 745 0253

IDEAL 0748 OF 332 JILT
 HOOS NELLY 536
 HOOS NELLY 208

KESSLERS FRONTMAN R001
 HOOS NELLY 075

DISP
1

Act BW	ADJ WW	BW	WW	YW	MILK	Marb	RE	Fat	DAM NR
80	663	+1.5	+48	+82	+42	+.26	+.02	+.039	101

Just like 974. He travels very well.

973 Hoos Energizer 973

03/09/2019 • REG: #19552921 • 973

IDEAL 4545 OF 7451 6224
 IDEAL 8561 OF 4545 4704
 IDEAL 4704 OF 2300 2358

IDEAL 7451 OF 8103 4465
 IDEAL 6224 OF 306 4231

IDEAL 2300 OF T510 3401
 IDEAL 2358 OF 7573 759

MARX 9723 SRT 601
 MARX PT QUEEN NANCY 0313

MARX TRUE GRIT 946
 HOOS EISA EVERGREEN 237
 HOOS EISA EVERGREEN 056

LAR IMAGE 832T
 HOOS 628 EISA EVERGREEN

DISP
2

Act BW	ADJ WW	BW	WW	YW	MILK	Marb	RE	Fat	DAM NR
109	676	+6.1	+56	+92	+26	+.22	+.12	+.009	106

Should make long lasting and productive cows.

976 Hoos Energizer 976

03/01/2019 • REG: #19552924 • 976

IDEAL 4545 OF 7451 6224
 IDEAL 8561 OF 4545 4704
 IDEAL 4704 OF 2300 2358

IDEAL 7451 OF 8103 4465
 IDEAL 6224 OF 306 4231

IDEAL 2300 OF T510 3401
 IDEAL 2358 OF 7573 759

S A V 707 RITO 9969
 WHITESTONE LADY X087

DOUBLE R BAR RITO Y188
 HOOS EVERELDA ENTENSE 600
 HOOS EVERELDA ENTENSE 984

HA POWER BOX 6708
 HOOS 630 EVERELDA ENTENSE

DISP
1

Act BW	ADJ WW	BW	WW	YW	MILK	Marb	RE	Fat	DAM NR
87	645	+4.9	+61	+115	+23	+.24	+.33	+.004	101

Dam is a little bigger framed and this bull shows that.

996

Hoos Energizer 996

03/03/2019 • REG: #19552938 • 996

IDEAL 4545 OF 7451 6224
IDEAL 8561 OF 4545 4704
IDEAL 4704 OF 2300 2358

IDEAL 7451 OF 8103 4465
IDEAL 6224 OF 306 4231

IDEAL 2300 OF T510 3401
IDEAL 2358 OF 7573 759

MARX ALMIGHTY 811 3KG
HOOS EVERELDA ENTENSE 631
HOOS EVERELDA ENTENSE 340

S R NEW DESIGN 5072
MARX PT DBL G ETHELDA 0211

IDEAL 0748 OF 332 JILT
HOOS EVERELDA ENTENSE 800

DISP
1

Act BW	ADJ WW	BW	WW	YW	MILK	Marb	RE	Fat	DAM NR
88	643	+3.8	+46	+79	+30	+0.8	+22	+0.12	97

A really deep sided 8561 son.



Hoos Mirage 978

978

Hoos Mirage 978

03/06/2019 • REG: #19552926 • 978

JSK MIRROR IMAGE 1507
HOOS MIRROR IMAGE 765
HOOS SUZY Q 540

W R A MIRROR IMAGE Z11
JSK LASS 1313

DOUBLE R BAR RITO Y188
HOOS SUZY Q 933

MARX TRUE GRIT 946
HOOS 234 OF 946 027
HOOS 027 OF 0035 328

MARX 9723 SRT 601
MARX PT QUEEN NANCY 0313

S A V FINAL ANSWER 0035
IDEAL 328 OF 03 820

DISP
2

Act BW	ADJ WW	BW	WW	YW	MILK	Marb	RE	Fat	DAM NR
90	648	+2.9	+38	+73	+20	+2.6	+25	+0.08	99

Very angular and correct. Really nice bull.

979

Hoos Mirage 979

03/20/2019 • REG: #19552927 • 979

JSK MIRROR IMAGE 1507
HOOS MIRROR IMAGE 765
HOOS SUZY Q 540

W R A MIRROR IMAGE Z11
JSK LASS 1313

DOUBLE R BAR RITO Y188
HOOS SUZY Q 933

IDEAL 5439 OF 1418 2455
HOOS EISA EVERGREEN 317
HOOS 628 EISA EVERGREEN

IDEAL 1418 OF 8103 4286
IDEAL 2455 OF 9199 4293

K C F BENNETT COALITION SCC
ER EISA EVERGREEN K215

DISP
2

Act BW	ADJ WW	BW	WW	YW	MILK	Marb	RE	Fat	DAM NR
74	746	+7	+43	+78	+40	+4.2	+0.4	+0.54	105

Heifer bull. Younger bull that is good.

980

Hoos Mirage 980

03/17/2019 • REG: #19552928 • 980

JSK MIRROR IMAGE 1507
HOOS MIRROR IMAGE 765
HOOS SUZY Q 540

W R A MIRROR IMAGE Z11
JSK LASS 1313

DOUBLE R BAR RITO Y188
HOOS SUZY Q 933

MARX ALMIGHTY 811 3KG
HOOS LADY 534
SINCLAIR LADY 7P40 0S21

S R NEW DESIGN 5072
MARX PT DBL G ETHELDA 0211

N BAR PRIME TIME D806
MAJESTY 0S21 OF 3S3 4465

DISP
1

Act BW	ADJ WW	BW	WW	YW	MILK	Marb	RE	Fat	DAM NR
96	654	+3.9	+60	+110	+29	+6.7	-.01	+0.57	99

Deep sided.

981

Hoos Mirage 981

03/26/2019 • REG: #19552929 • 981

JSK MIRROR IMAGE 1507
HOOS MIRROR IMAGE 765
HOOS SUZY Q 540

W R A MIRROR IMAGE Z11
JSK LASS 1313

DOUBLE R BAR RITO Y188
HOOS SUZY Q 933

DOUBLE R BAR RITO Y188
HOOS PRINCESS 538
HOOS 286 OF 946 070

S A V 707 RITO 9969
WHITESTONE LADY X087

MARX TRUE GRIT 946
HOOS 070 OF 832T 019

DISP
1

Act BW	ADJ WW	BW	WW	YW	MILK	Marb	RE	Fat	DAM NR
100	745	+5.8	+68	+131	+17	+1.3	+7.6	-.021	107

Young bull with lots of performance.

N

Hoos Mirror Image 765

02/26/2017 • REG: #18906182 • 765

W R A MIRROR IMAGE Z11
JSK MIRROR IMAGE 1507
JSK LASS 1313

W R A MIRROR IMAGE T10
W R A ROYAL LADY 3925

TEHAMA BLACKCAP REVOLUTION
BV JSK LASS 602

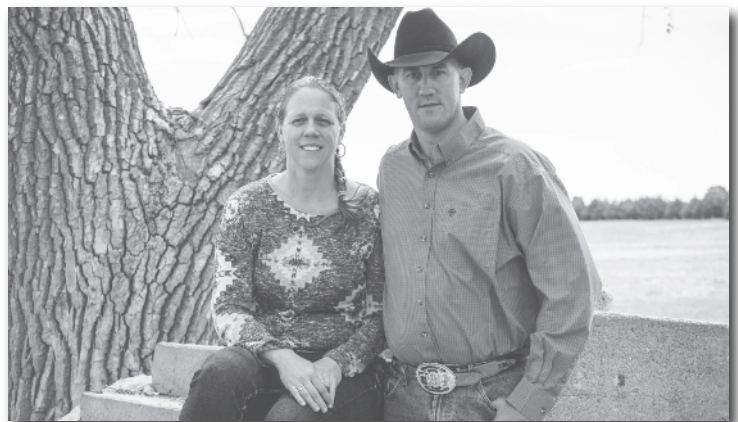
DOUBLE R BAR RITO Y188
HOOS SUZY Q 540
HOOS SUZY Q 933

S A V 707 RITO 9969
WHITESTONE LADY X087

WOODHILL FORESIGHT
HOOS SUZY Q D86 OF 086

BEPD	WEPD	YEPD	SC	MILK	MARB	RE
+3.4	+56	+107	+75	+25	+5.6	+39

We raised Image 765 and used him naturally.



Chet & Samantha Tausan



Hoos Guinness 731

0 Hoos Guinness 731

02/11/2017 • REG: #18913731 • 731

CONNEALY DUBLIN 8223
CONNEALY GUINNESS
PANDA OF CONANGA 3609

CONNEALY FULL FREIGHT
BLACK RINA OF CONANGA 69
EGL TARGET 1148
PONDERRA OF CONANGA 750

MC CONNELL IN TIME 201
HOOS DORINDA 400
SINCLAIR DORINDA 356 7298

SINCLAIR NICK OF TIME 6P90
SITZ PRIDE 7T
N BAR SHADOW X4124
IDEAL 7298 OF 809 3134

BE PD	WE PD	YE PD	SC	MILK	MARB	RE
+1.3	+65	+111	+56	+24	+78	+13

Guinness 731 was a feature in our 2018 bull sale, purchased by Clint and Julie Goodman. He is an attractive bull that that should improve quality grade.

982 Hoos Guinness 982

02/04/2019 • REG: #19552942 • 982

CONNEALY GUINNESS
HOOS GUINNESS 731
HOOS DORINDA 400

CONNEALY DUBLIN 8223
PANDA OF CONANGA 3609

MC CONNELL IN TIME 201
SINCLAIR DORINDA 356 7298

IDEAL 1281 OF 6469 JILT
HOOS 310 OF 1281 24E
T J INTEGRITY 24E

IDEAL 6469 OF 2215 3676
IDEAL 2636 OF 750 0427

G A R INTEGRITY
T J 2V 143X

DISP
1

Act BW	ADJ WW	BW	WW	YW	MILK	Marb	RE	Fat
97	701	+4.1	+59	+98	+27	+54	+14	+019

Deep sided and attractive.

985 Hoos Guinness 985

02/05/2019 • REG: #19552944 • 985

CONNEALY GUINNESS
HOOS GUINNESS 731
HOOS DORINDA 400

CONNEALY DUBLIN 8223
PANDA OF CONANGA 3609

MC CONNELL IN TIME 201
SINCLAIR DORINDA 356 7298

HOOS ALMIGHTY 238
HOOS EISA EVERGREEN 645
HOOS EISA EVERGREEN 306

MARX ALMIGHTY 811 3KG
IDEAL 608 OF 338 022

CONNEALY FINAL PRODUCT
HOOS EISA EVERGREEN 138

DISP
2

Act BW	ADJ WW	BW	WW	YW	MILK	Marb	RE	Fat
75	651	-1.9	+55	+98	+27	+71	+41	+028

Heifer bull. Really deep sided, high marbling bull.

983 Hoos Guinness 983

02/11/2019 • REG: #19552941 • 983

CONNEALY GUINNESS
HOOS GUINNESS 731
HOOS DORINDA 400

CONNEALY DUBLIN 8223
PANDA OF CONANGA 3609

MC CONNELL IN TIME 201
SINCLAIR DORINDA 356 7298

MARX ALMIGHTY 811 3KG
HOOS IDA 543
HOOS IDA 021

S R NEW DESIGN 5072
MARX PT DBL G ETHELDA 0211

MYTTY IN FOCUS
HOOS IDA 822

DISP
2

Act BW	ADJ WW	BW	WW	YW	MILK	Marb	RE	Fat
89	618	+2.7	+59	+101	+23	+74	-.13	+071

Looks like his dad.

986 Hoos Guinness 986

02/19/2019 • REG: #19552945 • 986

CONNEALY GUINNESS
HOOS GUINNESS 731
HOOS DORINDA 400

CONNEALY DUBLIN 8223
PANDA OF CONANGA 3609

MC CONNELL IN TIME 201
SINCLAIR DORINDA 356 7298

WOODHILL STATESMAN 54K-90N
HOOS DORA 937
HOOS DORA 712

SITZ GREATPLAINS 9520
WOODHILL LUCY 666-54K

RR 2931 AMBUSH 2346
IAR 3407 T T TOUCHSTONE 5510

DISP
1

Act BW	ADJ WW	BW	WW	YW	MILK	Marb	RE	Fat
108	669	+3.6	+64	+111	+21	+61	+09	+067

Dam is a 2009 model power cow. Lots of capacity.

984 Hoos Guinness 984

02/10/2019 • REG: #19552943 • 984

CONNEALY GUINNESS
HOOS GUINNESS 731
HOOS DORINDA 400

CONNEALY DUBLIN 8223
PANDA OF CONANGA 3609

MC CONNELL IN TIME 201
SINCLAIR DORINDA 356 7298

MARX ALMIGHTY 811 3KG
HOOS EISA EVERGREEN 640
HOOS EISA EVERGREEN 317

S R NEW DESIGN 5072
MARX PT DBL G ETHELDA 0211

IDEAL 5439 OF 1418 2455
HOOS 628 EISA EVERGREEN

DISP
2

Act BW	ADJ WW	BW	WW	YW	MILK	Marb	RE	Fat
86	660	+3.2	+65	+114	+26	+11	+29	+022

We are anxious to see how these Guinness sons scan.

987 Hoos Hesston 987

03/22/2019 • REG: #19552930 • 987

S A V HESSTON 2217
DOUBLE R BAR HESSTON D180
THUNDERFOOT EVERELDA Z288

S A V HARVESTOR 0338
S A V EMBLYNETTE 3301

SOO LINE MOTIVE 9016
C&H EVER ENTENSE 3210

MARX 0211 DBL G NEW B 713
HOOS 183 OF MYT 608
IDEAL 608 OF 338 022

S R NEW DESIGN 5072
MARX PT DBL G ETHELDA 0211

HYLINE RIGHT TIME 338
IDEAL 022 OF 7451 701

DISP
1

Act BW	ADJ WW	BW	WW	YW	MILK	Marb	RE	Fat
94	722	+2.0	+64	+112	+23	+53	+29	+028

Younger bull. Attractive bull with lots of performance and muscle



Double R Bar Hesston D180

P Double R Bar Hesston D180

03/10/2016 • REG: #18420102 • D180

S A V HARVESTOR 0338
S A V HESSTON 2217
S A V EMBLYNETTE 3301

S A V HERITAGE 6295
S A V EMBLYNETTE 7749

SOO LINE MOTIVE 9016
THUNDERFOOT EVERELDA Z288
C&H EVER ENTENSE 3210

S A F 598 BANDO 5175
S A V EMBLYNETTE 7319

HF KODIAK 5R
TLA BEAUTY 5R

BON VIEW NEW DESIGN 1407
SHADYBROOK EVER ENTENSE 491G

BE PD	WE PD	YE PD	SC	MILK	MARB	RE
+6	+56	+99	+24	+27	+81	+56

We used D180 as a natural service sire. This is his first calf crop.

988

Hoos Hesston 988

03/26/2019 • REG: #19552940 • 988

S A V HESSTON 2217
DOUBLE R BAR HESSTON D180
THUNDERFOOT EVERELDA Z288

S A V HARVESTOR 0338
S A V EMBLYNETTE 3301

SOO LINE MOTIVE 9016
C&H EVER ENTENSE 3210

MC CONNELL IN TIME 201
HOOS DORINDA 400
SINCLAIR DORINDA 3S6 7298

SINCLAIR NICK OF TIME 6P90
SITZ PRIDE 7T

N BAR SHADOW X4124
IDEAL 7298 OF 809 3134

DISP
2

Act BW	ADJ WW	BW	WW	YW	MILK	Marb	RE	Fat	DAM NR
85	689	+7	+54	+86	+28	+63	+43	+059	103

His dam is also the dam of our herd sire Guinness 731. Young and good.



Hoos Hesston 991

989

Hoos Hesston 989

03/02/2019 • REG: #19552931 • 989

S A V HESSTON 2217
DOUBLE R BAR HESSTON D180
THUNDERFOOT EVERELDA Z288

S A V HARVESTOR 0338
S A V EMBLYNETTE 3301

SOO LINE MOTIVE 9016
C&H EVER ENTENSE 3210

MOHNEN SUBSTANTIAL 272
HOOS MISS 404
HOOS MISS 009 FA 337

BENFIELD SUBSTANCE 8506
MOHNEN GLYN MAWR ELBA 1758

S A V FINAL ANSWER 0035
KMD MISS NEUTRON 377 337

DISP
2

Act BW	ADJ WW	BW	WW	YW	MILK	Marb	RE	Fat	DAM NR
92	677	+1.3	+63	+106	+29	+39	+43	+032	102

A bigger outlined Hesston.

991

Hoos Hesston 991

03/09/2019 • REG: #19552933 • 991

S A V HESSTON 2217
DOUBLE R BAR HESSTON D180
THUNDERFOOT EVERELDA Z288

S A V HARVESTOR 0338
S A V EMBLYNETTE 3301

SOO LINE MOTIVE 9016
C&H EVER ENTENSE 3210

IDEAL 0748 OF 332 JILT
HOOS HAZEL 464
HOOS HAZEL 148

IDEAL 332 OF 049 8221
IDEAL 357 OF 745 0253

MARX ALMIGHTY 811 3KG
ALC HAZEL P92P

DISP
2

Act BW	ADJ WW	BW	WW	YW	MILK	Marb	RE	Fat	DAM NR
88	631	+6	+55	+106	+24	+60	+57	+010	103

Soggy bull backed by a good cow.

990

Hoos Hesston 990

02/10/2019 • REG: #19552932 • 990

S A V HESSTON 2217
DOUBLE R BAR HESSTON D180
THUNDERFOOT EVERELDA Z288

S A V HARVESTOR 0338
S A V EMBLYNETTE 3301

SOO LINE MOTIVE 9016
C&H EVER ENTENSE 3210

MARX ALMIGHTY 811 3KG
HOOS ROSE 404
HOOS ROSE 014

S R NEW DESIGN 5072
MARX PT DBL G ETHELDA 0211

S A V FINAL ANSWER 0035
MS CC ROSE 246-8371

DISP
1

Act BW	ADJ WW	BW	WW	YW	MILK	Marb	RE	Fat	DAM NR
91	619	+2.5	+60	+110	+22	+56	+51	+017	98

Hesston's bulls might be the best sire group.

JUDD HOOS
INDEPENDENT SALES REPRESENTATIVE
AUTHORIZED TO SELL FOR SELECT COMPANIES

FULL SERVICE AI TECHNICIAN
PROVIDING SERVICE TO OUR LOCAL PRODUCERS



Hoos Hesston 992

992

Hoos Hesston 992

02/21/2019 • REG: #19552934 • 992

S A V HESSTON 2217
DOUBLE R BAR HESSTON D180
THUNDERFOOT EVERELDA Z288

S A V HARVESTOR 0338
S A V EMBLYNETTE 3301

SOO LINE MOTIVE 9016
C&H EVER ENTENSE 3210

CONNEALY FINAL PRODUCT
HOOS QUEEN 503
HOOS 282 OF 946 015

CONNEALY PRODUCT 568
EBONISTA OF CONANGA 471

MARX TRUE GRIT 946
HOOS 015 OF 7773 519

DISP
2

Act BW	ADJ WW	BW	WW	YW	MILK	Marb	RE	Fat	DAM NR
85	681	+1.6	+55	+88	+26	+79	+30	+043	101

Might be the best bull in the sale.

994

Hoos Hesston 994

02/28/2019 • REG: #19552936 • 994

S A V HESSTON 2217
DOUBLE R BAR HESSTON D180
THUNDERFOOT EVERELDA Z288

S A V HARVESTOR 0338
S A V EMBLYNETTE 3301

SOO LINE MOTIVE 9016
C&H EVER ENTENSE 3210

IDEAL 332 OF 049 8221
HOOS QUEEN ELLA 685
IDEAL 608 OF 338 022

IDEAL 049 OF F506 6375
IDEAL 8221 OF 5439 4517

HYLINE RIGHT TIME 338
IDEAL 022 OF 7451 701

DISP
2

Act BW	ADJ WW	BW	WW	YW	MILK	Marb	RE	Fat	DAM NR
89	721	+1.9	+73	+131	+36	+57	+43	+027	107

Consistent Hesston with lots of eye appeal and muscle.

993

Hoos Hesston 993

02/27/2019 • REG: #19552935 • 993

S A V HESSTON 2217
DOUBLE R BAR HESSTON D180
THUNDERFOOT EVERELDA Z288

S A V HARVESTOR 0338
S A V EMBLYNETTE 3301

SOO LINE MOTIVE 9016
C&H EVER ENTENSE 3210

CARTER WIND STAR 218
HOOS BETTY BLACKBIRD 614
HOOS BETTY BLACKBIRD 427

V D A R REALLY WINDY 4097
CARTER BARBARA NELL 2204

IDEAL 1281 OF 6469 JILT
IDEAL 501 OF 9126 319

DISP
1

Act BW	ADJ WW	BW	WW	YW	MILK	Marb	RE	Fat	DAM NR
76	553	+0	+46	+78	+28	+94	+31	+067	91

Has a spot in his eye, should work on larger heifers.

995

Hoos Hesston 995

04/03/2019 • REG: #19552937 • 995

S A V HESSTON 2217
DOUBLE R BAR HESSTON D180
THUNDERFOOT EVERELDA Z288

S A V HARVESTOR 0338
S A V EMBLYNETTE 3301

SOO LINE MOTIVE 9016
C&H EVER ENTENSE 3210

RITO 707 OF IDEAL 3407 7075
TANNER LUCY 7014 A147
WHITESTONE LUCY 7014

R R RITO 707
IDEAL 3407 OF 1418 076

S A V 8180 TRAVELER 004
BASIN LUCY 178E

DISP
2

Act BW	ADJ WW	BW	WW	YW	MILK	Marb	RE	Fat	DAM NR
85	682	+1.5	+55	+93	+23	+35	+68	+019	100

Youngest bull in the sale, don't over look him!

HoosCow Genetic Story

Our genetic story and evolution from selling bulls to becoming a breeding program...

We started buying registered Angus cows in 1999 with the goal of adding ten registered cows each fall by attending dispersions or cow sales simply targeting proven productive cows. We bred a lot of these cows back by selecting bulls with outstanding EPD's and the current popular bulls. As our herd grew, it was apparent that these cattle were not meeting our expectations. With our environment and feed program a lot of these cattle were not producing the performance necessary and they were not able to maintain their flesh on sandhills grass that they needed to breed back.

In the fall of 2008, we found a listing of a cow herd dispersion in Michigan consisting of twenty-two registered cows three to eight years of age from Phil AcMoody at Butternut Ridge. I called Phil and he informed me that he was keeping his bred heifers and selling the remainder. Phil served an internship with Martin Jorgensen in the 70's while attending Michigan State. This resulted in Martin offering Phil a partnership in the embryo program to help him get started in the business. Martin supplied the cow and Phil was required to pay the flush expenses. The resulting embryos then were split. It appeared to me that the twenty-two cows Phil was selling traced back to three or four cows gained from this process. Phil and I discussed his cows and what we were searching for. He sent me some amateur pictures and I decided to buy the cows sight unseen. Everyone thought I was crazy!

The EPD profile associated with these cows were less than desirable. High birth weight, low weaning weight, low yearling weight, no carcass etc. Regardless, we brought them here to compete in our environment against our sixty head that were designed with popular bloodlines and excellent EPD's. All twenty-two cows calved unassisted. From day one you could see the difference in the calves. When we got to fall, the twenty-two cows from Butternut Ridge easily won the competition. They maintained significantly more body condition while raising much heavier calves showing added muscle and capacity. It was obvious that this type of cow added real value and that EPD's could be misleading!

We had a plan and knew where we needed to go. In order to build more cattle of this type we implemented an aggressive embryo program. We chose three of the cows that we had purchased from Phil, Ideal 501, Ideal 507 & Ideal 608. We purchased the 0748 bull and the 6313 donor cow from Jorgensen Land & Cattle. We have collected semen on some of our best bulls carrying this genetic core such as Hoos Amos 910, Hoos Blackcat 361, Hoos Almighty 238, & Hoos Incentive 708. We have also found this bloodline in popular sires SAV Resource, SAV renown, and SAV Rito 9969. Perfection simply does not exist in the cattle business, instead only the pursuit of making cattle better and more profitable. We have identified some areas where we can enhance value, so we carefully select a few sires from the mainstream genetics that we think offer increased profitability without sacrificing the foundation of what we know works.

Meanwhile, Phil AcMoody continues to breed cattle and be successful. Phil has marketed his bulls through the Midland Bull Test in Montana. The Midland Bull test attracts six hundred Angus bulls from across the nation each fall to compete on the "grow safe" system. The "grow safe" system measures the daily feed intake of each animal individually. This allows for them to accurately measure feed conversion and efficiency. In the 2010/2011 Midland bull Test, Phil had the champion feed efficiency bull. That bull had a feed conversion of 4.04, while the 450 bulls that made the sale converted at 8.20. In the 2018/2019 Midland Bull Test, Phil had the "World Champion Pen of Three", had the "Champion low BW ADG bull-group 1" and the "Champion ADG bull-group 1". He is very competitive every year. We purchased one of his bulls last Spring to use as a herd bull. If you like what we do, and you get to April and are needing more bulls I would strongly suggest you look him up. He is a good friend with the utmost integrity.



Phil AcMoody "pictured center" receiving his awards at last years Midland Bull test.

HoosCow Angus

Judd & Brandy Hoos
PO Box 751
Rushville NE 69360

HoosCow ANGUS BULL SALE

Tuesday
FEBRUARY 18, 2020



Hoos Prosperity 907



Hoos Unanimous 910



Hoos Amos 935



Hoos Mirage 978